

29 Essex Street, Killara, NSW, 2071

STONE

House For Sale

Tuesday, 10 September 2024

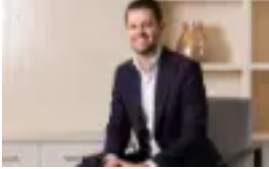
29 Essex Street, Killara, NSW, 2071

Bedrooms: 5

Bathrooms: 4

Parkings: 4

Type: House



Matt Payne

0290953500

Brand new designer masterpiece radiates unparalleled luxury

Finished to perfection with uncompromising attention to detail and master-crafted with globally sourced luxury, this brand new home is unmatched in generosity of space and uplifting light-filled ambience. The 460sqm approx. two-storey layout sits within a level 935sqm approx. north to rear landscaped parcel basking in sunshine.

The highly functional design is immediately impressive with a sky-high 6m entry hall graced with a bespoke winding staircase and statement Julie Neill chandelier. Living spaces offer versatility amongst beauty whether desiring formality or relaxed comfort. Open transition to alfresco poolside entertaining centres on the showpiece marble kitchen and the spacious living and dining area. Bedrooms are designed for comfort and amenity with downstairs offering multi-gen appeal and upstairs including a spectacular master suite. Opulent stone bathrooms enjoy heated floors and custom fittings and finishes of the highest calibre. Inspection is a must to truly appreciate the resplendence of this unique masterpiece.

- Brand new custom built by Zenith Homes and architecturally designed by Sarah Remaili, concrete slab + Hebel
- Breathtaking statement entry hall sets a tone of architectural splendour
- Sumptuous lounge or family room with illuminated cabinets and marble fireplace
- Calacatta Vagli/Carrara marble, limestone, granite, travertine show throughout
- Bespoke kitchen, butler pantry, Falcon dual fuel range, Liebherr fridge + freezer
- Spacious living and dining, French doors + bifolds to BBQ alfresco and pool
- European oak flooring in herringbone layout flows throughout
- Five extra-large bedrooms, three ensuites, custom built-in/walk-in robes
- Palatial master, dressing room, Astra Walker fittings, custom stone surfaces
- Downstairs guest bedroom with ensuite holds multi-generational appeal
- Bathrooms all with custom luxury stone finishes, premium fitting, heated floors
- Covered alfresco, full BBQ kitchen, showpiece wine cellar, Liebherr wine fridge
- Fully mosaic tiled heated saltwater swimming pool with jets, poolside cabana
- Double lock up garage, Tesla charger, auto gates and door, internal access
- Ducted reverse air con, solar panels, keyless entry, video intercom, security
- Walk to rail, in Killara Primary + Killara High zones, rail to private schools