

29 Lithgow Street, Beveridge, Vic 3753

CHWYLA

House For Sale

Wednesday, 26 June 2024

29 Lithgow Street, Beveridge, Vic 3753

Bedrooms: 4

Bathrooms: 2

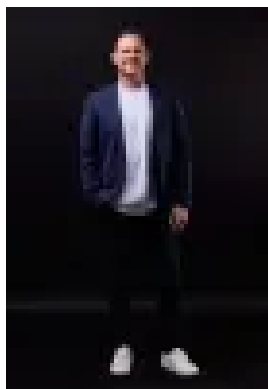
Parkings: 2

Area: 612 m2

Type: House



Jim Marsh
0418104430



Paul Chwyla
0386009995

\$595,000 - \$635,000

Make more of : 612m2 Corner block Mandalay Four bedrooms Two bathrooms Three living areas Double garage Additional rear driveway parking High ceilings Tiled flooring Pendant lighting Sheers Stone kitchen benchtops 900mm appliances Dishwasher Pantry Master with walk-in robe Two bedrooms with built-in robes Built-in tv cabinet in living area Ducted heating Evaporative cooling Ceiling fans to bedrooms Covered rear alfresco with pull-down blinds Extended decked area Low maintenance landscaping CCTV with 8 cameras 12 solar panels 160m to Mantel Green Playground 250m to Beveridge Primary School 500m to Club Mandalay 2.2km to Hume Freeway entrance 2.5km to Hunters Tryst 15 minutes to Merrifield 15 minutes to Marnong Estate The initial appeal – A family home right by everything you need. You'll have Mantel Green playground in your backyard [right over your back fence], you'll be 'leaving just before the bell' distance to Beveridge Primary School, and with Club Mandalay only 500 metres away, it's time to start working on your swing. The main attraction – Living in Mandalay on a 612m2 corner block with 8ft ceilings, the luxury of three separate living zones, 12 solar panels, and an oversized covered alfresco with pull-down blinds. Your journey here starts this Saturday.