

29 Redington Drive, Butler, WA 6036

Realmark

House For Sale

Tuesday, 25 June 2024

29 Redington Drive, Butler, WA 6036

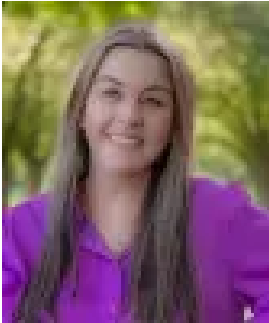
Bedrooms: 4

Bathrooms: 2

Parkings: 2

Area: 560 m2

Type: House



Melanie Evans

0893009300

Price guide on application

What we love Welcome to this fabulous 4 bedroom, 2 bathroom family residence offering easy care living. There is a bold chef's kitchen with island breakfast bar, large bench space, stainless steel appliances with dishwasher and double fridge recess. The open plan family and dining area has 2x sliding doors leading out to the decked alfresco and low maintenance yard for entertaining all year round. There is also a separate theatre room plus front study which could also be used as a 5th bedroom, spaces for everyone. There is still the opportunity to add your own style to this sensational home. What we know Front entry porch with large door Outdoor bar area Solar power Security cameras and alarm 1x split system air conditioner in lounge area Tiled flooring Central kitchen with ample storage Dishwasher Stainless-steel appliances Double fridge recess High ceilings King sized main bedroom with walk in robe Double vanities in main bathroom Double garage with shoppers' entry Decked alfresco area Extra parking out the front Built approximately 2010 Residence approximately 232sqm Block size approximately 560sqm Enjoy convenient living in a substantial family residence plus local amenities include walking distance to Salterforth Park or Sheldwich Park. Major attractions nearby include Brighton Village, Butler Central Shopping Centre, East Butler Primary School and only a short drive to the beautiful Jindalee Beach plus easy access via Lukin Dr to the Mitchell freeway. Register your interest today. Who to talk to Melanie Evans 0476 874 030 mevans@realmark.com.au Disclaimer: This information and pictures are provided for general information purposes only and is based on information provided by the Seller and may be subject to change. No warranty or representation is made as to its accuracy and interested parties should place no reliance on it and should make their own independent enquiries and complete your own due diligence.