

298 Old Canterbury Rd, Ashfield, NSW, 2131

House For Sale

Thursday, 22 August 2024



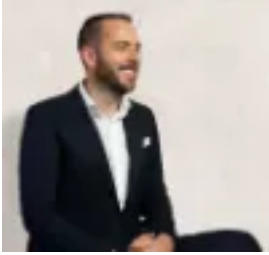
298 Old Canterbury Rd, Ashfield, NSW, 2131

Bedrooms: 8

Bathrooms: 2

Parkings: 4

Type: House



Matthew Everingham

0296424288

High Exposure Location with B6 Zoning & Industrial & Commercial Potential

****Access via Old Canterbury Road ****

Set in an outstanding corner position in an ultra convenient, high exposure location is this remarkable property. With a large array of rooms and amenities and a significant block size of 683sqm, this is a listing not to be missed out on by the savvy investor or business owner looking for the perfect workplace.

POTENTIAL

- Flexible B6 Zoning and excellent FSR of 1:5:1 provides extensive opportunity
- Excellent scope for investment with potential to redevelop into industrial or commercial building (subject to council approval)

PROPERTY

- Prime corner position
- 683sqm block and 13m high building
- Eight multipurpose rooms with possible usage as consultation, treatment rooms or offices
- Reception and waiting area to the front of the property
- Self contained studio with large living area as well as kitchen and internal laundry
- Two bathrooms located throughout as well as additional toilet and sinks across rooms
- Lock up garage fit for two cars and additional parking for two more on driveway

POSITION

- Effortless access to Old Canterbury Road and New Canterbury Road
- 1km to Hurlstone Park Station
- 2km to Ashfield
- 1.3km to Canterbury Station

Call to arrange an inspection.

DISCLAIMER: While Richard Matthews Real Estate have taken all care in preparing this information and used their best endeavours to ensure that the information contained therein is true and accurate, but accept no responsibility and disclaim all liability in respect of any errors, inaccuracies or misstatements contained herein. Richard Matthews Real Estate urge prospective purchasers to make their own inquiries to verify the information contained herein.