

3/620 Polding Street, Bossley Park, NSW 2176

CENTURY 21

House For Sale

Tuesday, 2 July 2024

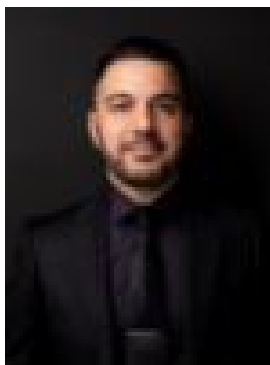
3/620 Polding Street, Bossley Park, NSW 2176

Bedrooms: 3

Bathrooms: 2

Parkings: 2

Type: House



Sam Kindo
0458558768



Ben Palmerone
0402689336

\$769,000 to \$799,000

This beautiful double storey townhouse is not just a home; it's a lifestyle upgrade. Immerse yourself in the convenience of contemporary design and premium amenities, perfectly situated in the heart of Bossley Park. Key Features:- Three Bedrooms: Enjoy the luxury of space with one bedroom conveniently located downstairs, ideal for guests or a home office, and two spacious bedrooms upstairs providing the perfect retreat.- Two Bathrooms: Experience the ease of living with a bathroom on each level, offering both functionality and privacy.- Combined Kitchen, Lounge, and Dining: Embrace the open-plan design that seamlessly integrates the kitchen, lounge, and dining areas. This creates a harmonious space for entertaining friends and family.- Single Lock-Up Garage + Car Space: Secure your vehicles in the single lock-up garage or the car space at the front of the property, providing both convenience and peace of mind.- Internal Laundry: Effortlessly manage household chores with the internal laundry, making daily tasks a breeze.- Cosy Backyard: Unwind in your own private oasis—a small backyard that offers a perfect blend of relaxation and outdoor enjoyment.- Ducted Air Conditioning: Stay comfortable year-round with ducted air conditioning, ensuring a pleasant living environment.- Prime Location: Within walking distance to Stockland Shopping Centre, T-Way, Schools, and Fairfield Hospital, this townhouse puts you at the center of convenience. Surroundings:- Stockland Shopping Centre: Indulge in shopping, dining, and entertainment just steps away.- T-Way: Enjoy easy access to public transportation for stress-free commuting.- Schools: Proximity to schools ensures a seamless educational journey for your family.- Fairfield Hospital: Health care is within reach for added peace of mind. Don't miss the opportunity to make this exceptional townhouse your new home. Act now and elevate your lifestyle in Bossley Park! For enquiries and to schedule a viewing, contact me on 0458 558 768. Your dream home is just a call away!