

# 3 Westbury Pl, Carindale, QLD, 4152



## House For Sale

Saturday, 31 August 2024

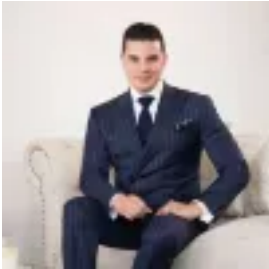
3 Westbury Pl, Carindale, QLD, 4152

**Bedrooms: 5**

**Bathrooms: 3**

**Parkings: 2**

**Type: House**



Will Torres

0738432938

## Magnificent Modern Home in a Tree-Lined Cul-de-sac

In a tranquil setting opposite the trees in a quiet cul-de-sac, this magnificent residence exudes stylish elegance atop a low-maintenance 450sqm lot.

Inviting gorgeous green vistas and a north-west aspect, the residence forms an executive escape with generous proportions, sleek tiles, wooden flooring and solid wooden stairs.

The formal entryway beckons you inside the open-plan living areas, which comprise family, dining and rumpus spaces inviting you to unwind. Orientated around the modern gourmet kitchen, the resident chef and entertainers will adore the superior design, featuring a waterfall stone island bench, walk-in pantry, integrated dishwasher, and Miele appliances, including an oven, steamer, microwave, exhaust and gas stove.

Glass sliders connect these alluring interiors to a south-east-facing outdoor entertaining area, which offers blissful privacy, beautiful pavers, and outlooks over the secure yard.

A downstairs study/additional living room and an upstairs leisure area provide extra spaces for parents, children and guests to work and relax.

There are five sensational bedrooms, including the palatial master retreat, boasting a walk-in robe, a luxurious ensuite with dual basins and a spa bath, and a private balcony basking in the calming leafy views. A second bathroom with a bathtub has direct access from two upstairs bedrooms, and the third bathroom is located downstairs.

Additional features:

- Secure double-car garage
- Built-in wardrobes in all bedrooms
- Freshly painted concrete sleepers, retaining wall and fence
- Ducted heating and air-conditioning
- Ceiling fans in all bedrooms

Nestled amongst the trees in a peaceful cul-de-sac, buyers will love the lifestyle. You can visit the wide array of local parks, travel 1.9km to Pacific Golf Club, and take advantage of the local swim school and gym. Children are in the Belmont State School and Cavendish Road State High School catchments and close to private colleges. Just 5 minutes from Westfield Carindale and offering easy access to bus stops and the M1, this property provides exceptional convenience.

Disclaimer: Whilst every care is taken in the preparation of the information contained in this marketing, Torres Property will not be held liable for any errors in typing or information. All interested parties should rely upon their own enquiries in order to determine whether or not this information is in fact accurate.