

31A Mylson Avenue, Broadford, Vic 3658

CHWYLA

House For Sale

Thursday, 11 July 2024

31A Mylson Avenue, Broadford, Vic 3658

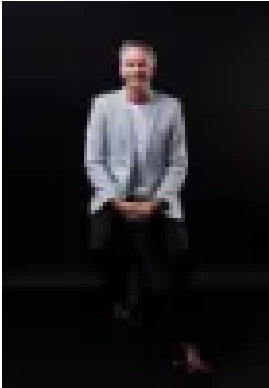
Bedrooms: 3

Bathrooms: 2

Parkings: 2

Area: 638 m2

Type: House



Troy Hodge
0386009995



Michael Acott
0478894642

Asking \$499,950

Make more of : 638m² block 3 Three bedrooms 2 Two bathrooms 2 Open plan kitchen, living, dining area 2 Double garage 2 Double gated side access into parking area for van, trailer 2 Significant driveway, front yard parking 2 Security doors 2 Tiled flooring 2 Blinds 2 600mm appliances 2 Dishwasher 2 Pantry 2 Master with walk-in robe 2 Two bedrooms with built-in robes 2 Laundry with storage 2 Hallway storage cupboards 2 Refrigerated cooling and heating 2 Covered alfresco 2 Low maintenance landscaping 2 Water tank 2 Colourbond fencing 2 550m to Donaldson Drive Playground, outdoor gym, reserve 2 850m to Broadford train station 2 1.2km to Broadford township 2 The initial appeal – The kids will be 550m on the bike from Donaldson Drive Playground [you'll also be 550m from Donaldson Drive outdoor gym if that's your thing]. You'll be able to walk to the station in about 12ish minutes, and the shops or the pub in 20ish. The main attraction – A home tucked away in a private location with refrigerated cooling, roomy bedrooms and open plan living. If you own lots of wheels, you'll have double-gated side access into backyard parking for your van, trailer, camper, etc. There's also significant driveway and front yard parking space, plus your double garage. Your journey here starts this Saturday.