

33 Fitzroy Street, Holmview, Qld 4207

House For Sale

Wednesday, 10 July 2024



33 Fitzroy Street, Holmview, Qld 4207

Bedrooms: 4

Bathrooms: 2

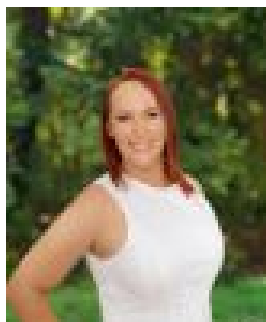
Parkings: 2

Area: 400 m2

Type: House



Eiles Brittany Hunt
0739103776



Niki Blenkins
0421229033

Mid to High \$700,000's

Offering an easy-care lifestyle in a family-friendly setting, this stylish 4 bedroom home is nestled on a low maintenance 400m² block amid leafy surrounds. Walking distance to Rockford Park, this feature packed residence will impress from the moment you step inside. Combining quality finishes with a practical layout this property is suited for families and investors who are seeking an immediate return on investment. Situated in a quiet pocket of Holmview, everything you need is only moments away. From unbeatable shopping to quality schools and incredible dining options, this locale delivers the ultimate lifestyle of relaxation and convenience. **INSIDE-** Four well-proportioned bedrooms with BIR and ceiling fans- Spacious Master Bedroom features a stunning ensuite, WIR and air conditioning- Open plan entertainer kitchen complete with stone benchtops, breakfast bar and deluxe appliances- Open and airy living and dining zones that flows seamlessly to the rear alfresco- Contemporary main bathroom with separate bath and shower- Additional study, ideal for those working from home- Tiled flooring in high traffic zones for easy care living- Air conditioning in main living zones for yearlong comfort- Security screens and ceiling fans throughout- Plentiful storage with linen cupboard and spacious laundry - Remote double lock up garage**OUTSIDE-** Appealing contemporary facade- Fully fenced, easy to care for backyard- Great covered outdoor patio, perfect for entertaining**Popular with young families and professionals, this quiet nook offers easy living without compromising on convenience. Close to the M1, both Brisbane and the Gold Coast are easily accessible, while families will relish the choice of parks, schools and great shopping close by.****LOCATION-** 15 min drive to Holmview Central Shopping Centre- 15 min drive to Edens Landing State School- 15 min drive to Windaroo Valley State High School- 16 min drive to Canterbury College- 16 min drive to Holmview station- 19 min drive to Windaroo Lakes Golf Club- 35 min to Brisbane- 40 min drive to Brisbane airport- 45 min to the Gold Coast**Perfectly positioned between the city and the coast, Holmview is a thriving region. Highly sought after by families and professionals alike due to the abundant natural surrounds, accessibility to amenities and carefree work/life balance, now is the time to unlock the door to better living. Arrange your inspection today!****Current Rent: \$600p/w until August 2024****Council Rates + Water Rates: Approximately \$850 per Qtr. depending on water usage.****How old is the property: Built in 2022****Land Size: 400sqm**"RE/MAX Revolution Real Estate has taken all reasonable steps to ensure that the information contained in this advertisement is true and correct but accepts no responsibility and disclaims all liability in respect to any errors, omissions, inaccuracies or misstatements contained. Prospective purchasers should make their own enquiries to verify the information contained in this advertisement."