

33 Treeve Parkway, Werribee, Vic 3030



House For Rent

Wednesday, 12 June 2024

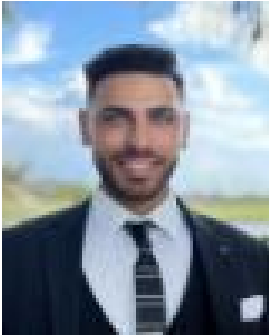
33 Treeve Parkway, Werribee, Vic 3030

Bedrooms: 3

Bathrooms: 2

Parkings: 2

Type: House



Matthew Botros
1300876925

\$480 Per Week

Looking For a Short-Term Lease? Renovating your current home? This is the Property for You. Royal Melbourne Estates presents to you 33 Treeve Parkway Werribee Vic 3030 This magnificent home located in the heart of Harpley Estate The perfect home that consists of 3 bedrooms, including the master room with an ensuite and walk in robe Situated in a quiet and convenient location this home is sure to impress from the moment you lay eyes on it. Offering an open plan dining and living area finished by an elegant kitchen, Caesarstone benchtop, glass splashback, stainless steel appliances and low backyard perfect place for you all to relax. a bathroom with a separate toilet. The property offers the following stunning features:- Large Open Plan Living and Dining Area- Kitchen with Stainless-Steel Appliances- Master Bedroom with walk in wardrobe and Ensuite- Main Bathroom with Separate Toilet- Heating & Cooling- 2 Car Garage Nearby amenities include:- Wyndham Vale Square Shopping Centre- IGA Wyndham Vale- Public Transport- Harpley Playground Local schools nearby- Wyndham Vale Primary School- Iramoo Primary School- Walcom Ngarrwa Secondary College- Lollypop Creek Primary School Apply Now, as this property won't last!! *Photo ID required at open for inspection Disclaimer: We have, in preparing this document, used our best endeavours to ensure that the information contained in this document is true and accurate, but we accept no responsibility and disclaim all liability in respect to any errors, omissions, inaccuracies or misstatements in this document. Prospective renters should make their own enquiries to verify the information contained in this document. renters should make their own enquires.