

342 Petrie Creek Road, Rosemount, Qld 4560



Sold House

Tuesday, 25 June 2024

342 Petrie Creek Road, Rosemount, Qld 4560

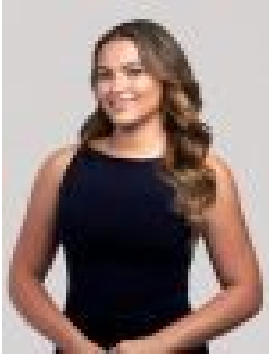
Bedrooms: 4

Bathrooms: 1

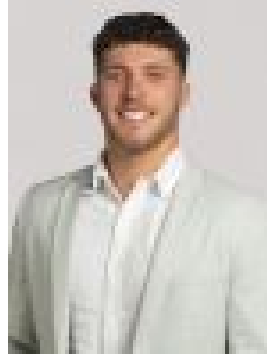
Parkings: 4

Area: 3716 m2

Type: House



ANGELINA SWEENEY
0413633275



OLLIE LEHMANN
0456879703

Contact agent

Features:- Spacious Land: Enjoy 3,716m² of usable land, perfect for various activities!- Comfortable Living: The property boasts 4 bedrooms and 1 bathroom, ideal for families.- Ample Parking: Accommodate up to 4 cars with ease.- Powered Shed: Includes a versatile powered shed for all your storage and workshop needs.- Energy: Equipped with a 5kW solar system, contributing to lower energy costs.- Recreational Pool: Relax and unwind in the in-ground pool.- Convenient Location: - Just 5.7 km from Bli Bli Shopping Centre. - Only 5.5 km to Nambour Shopping Centre. - A short 15-minute drive to Maroochydore/Sunshine Plaza. - 15 minutes away from the beautiful Sunshine Coast beaches.- Fruit Trees: Enjoy a variety of fruit trees on the property.- Secure: The property is fully fenced, ensuring privacy and security.

Disclaimer: While every effort has been made to ensure the accuracy of these details, neither the vendor nor the agent guarantees their precision. Interested parties should not consider these details as factual representations but should verify them through inspection or other means.