

**34a Seaside Drive, Kingscliff, NSW 2487**



**House For Sale**

Saturday, 29 June 2024

34a Seaside Drive, Kingscliff, NSW 2487

**Bedrooms: 4**

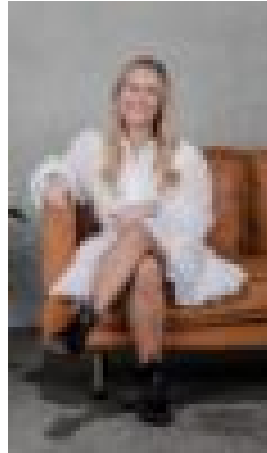
**Bathrooms: 3**

**Parkings: 2**

**Type: House**



Jordan Brown  
0455579014



Bella Johnson  
0468822077

## PRICE GUIDE - \$1.55M - \$1.6M

Discover the epitome of coastal living with this modern beach house ideally situated near Kingscliff Beach and overlooking lush parklands. Enjoy the convenience of being a short stroll away from the pristine sands of Kingscliff Beach and the charming cafes and restaurants of Seaside Village. Nestled alongside a spacious park complete with a playground, and just 150 meters from the beach, the location is simply unbeatable. Step into this light-filled beach house and experience the refreshing ocean breeze throughout the open-plan layout. Boasting a creative design, this beach house is a spacious family home but with the click of one door can be reconfigured to have its own separate self-contained apartment. At the ground level the living, kitchen, and dining areas seamlessly flow into the backyard and lush private courtyard, perfect for entertaining or enjoying quiet moments. At the upper level there are 4 bedrooms and an additional living area, but with the flexibility to close off one end to become a single bedroom apartment has its own direct access, single car port, full kitchen and bathroom and open plan living area that flows to its north facing deck. Whether you are looking for a spacious family home, a relaxing weekender, or a versatile investment opportunity - the living options and lifestyle offered by this property are truly special. If you've been dreaming of a low-maintenance lifestyle by the sea, your search ends here. Now is the time to invest in the coveted coastal lifestyle or capitalise on high rental demand in this sought-after area. For more information or to schedule a private inspection, contact Jordan Brown at 0455 579 014.

**Property Features:-** 4 Bedrooms, including a master suite with a spacious ensuite- 3 Bathrooms (4 toilets) - Overlooks Seaside Park- Flexible design with separate self-contained apartment- Tiles throughout the lower level- Polished concrete flooring- Kitchen equipped with stone bench-tops, quality appliances, soft-close drawers, and island bench- Three separate living areas for added flexibility- Ducted air-conditioning upstairs for year-round comfort- Split system air-conditioning downstairs- Double car space with one carport- Beautifully landscaped gardens

**5 MINUTES TO TWEED VALLEY HOSPITAL**  
**15 MINUTES TO GOLD COAST AIRPORT**  
**30 MINUTES TO BYRON BAY**  
**CLOSE TO SHOPS, CAFES, RESTAURANTS, SALT VILLAGE, PARK, MEDICAL CENTRE, COLES SHOPPING CENTRE & BUS STOP.**

**Disclaimer:** All information (including but not limited to the property area, floor size, price, photos, address and general property description) is provided as a convenience to you and has been provided to LJ Hooker by third parties. LJ Hooker is unable to definitively confirm whether the information listed is correct or 100% accurate. LJ Hooker does not accept any liability (direct or indirect) for any injury, loss, claim, damage or any incidental or consequential damages, including but not limited to lost profits or savings, arising out of or in any way connected with the use of any information, or any error, omission or defect in the information, contained on the Website. Information contained on the Website should not be relied upon and you should make your own enquiries and seek legal advice in respect of any property on the Website. Prices displayed on the Website are current at the time of issue, but may change.