

**35 Orchid Drive, Keysborough, Vic 3173**



**House For Sale**

Wednesday, 3 July 2024

35 Orchid Drive, Keysborough, Vic 3173

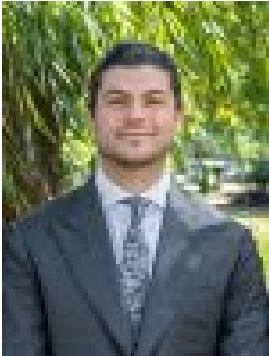
**Bedrooms: 2**

**Bathrooms: 2**

**Parkings: 1**

**Area: 119 m2**

**Type: House**



Rene Mawad  
0403141596



Zuleika Barnes  
0412432951

## **Auction (\$550,000 - \$605,000)**

**THE PROPERTY** Nestled in a boutique community, this sparkling two-bedroom, two-bathroom contemporary townhouse offers a charismatic and carefree lifestyle close to everything you need. Spread across two enticing levels, the ground floor features the luxe main bedroom with built-in robe, split system and ensuite effect to the sparkling bathroom, as well as a dedicated laundry and storage cupboards. Journeying upstairs, discover the stunning, modern open plan living and dining zone, complemented by stylish engineered floorboards underfoot, with huge glass sliding doors opening up to the serene private balcony, a haven for relaxation. Home chefs will appreciate the quality appointments within the sleek gourmet kitchen including stone benchtops, SMEG oven, stovetop & dishwasher, breakfast bar and abundant storage, with ample room for relaxed dining alongside. Rounding out the inclusions, a first-floor bedroom with built-in robe and electric wall heater, main bathroom complete with shower, vanity and toilet, and single garage with internal access.

**THE FEATURES** • Contemporary two-bedroom, two-bathroom townhouse • Bright & modern first-floor open plan living & dining • Two plush bedrooms, both with built-in robe storage • Two sparkling bathrooms with vanity, shower & toilet • Luxurious engineered flooring • Serene private balcony for relaxed entertaining • Split system heating & cooling in living & main bedroom • Under stair storage with light • Single garage with convenient internal access • Water tank storage • Bike storage • Three (3) parking permits

**THE LOCATION** Located in a wonderfully convenient position, with shopping at HomeCo and Parkmore Shopping Centre close by, an array of parkland within the area, local schools nearby including Keysborough Primary, Lighthouse Christian College and Haileybury College and easy access to buses, trains and Eastlink.

On Site Auction Saturday 27th of July at 9:30am