

36 Tedcastle Drive, Aintree, Vic 3336

House For Rent

Thursday, 11 July 2024



THE ELEET

RESIDENTIAL • DEVELOPMENTS • LAND • PROJECTS
CAROLINE SPRINGS

36 Tedcastle Drive, Aintree, Vic 3336

Bedrooms: 4

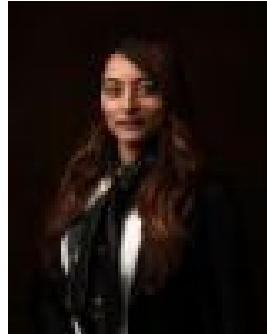
Bathrooms: 2

Parkings: 2

Type: House



Dee Sengupta
0385487100



Sweetly Saran
0404584000

\$570 per week

THE ELET Caroline Springs proudly welcome to this exquisite 4-bedroom, 2-bathroom home with a 2-car garage, located in a convenient and highly sought-after neighborhood. This property offers a perfect blend of modern amenities and comfortable living spaces, designed to cater to all your needs. As you approach the home, you are greeted by a decent-sized front yard and a spacious entrance that sets the tone for the elegance within. Large windows throughout the property allow natural light to flood the rooms, creating a bright and welcoming atmosphere. The property is equipped with ducted heating and evaporative cooling, ensuring a comfortable environment year-round. The heart of this home is its modern kitchen, featuring stainless steel appliances, including a gas stove and dishwasher. There is ample space for a fridge and plenty of storage options, including a pantry, to keep your kitchen organized and clutter-free. Each of the four bedrooms is carpeted, providing a warm and cozy feel. The bathrooms are well-appointed, with stylish vanities, and one includes a bathtub for those relaxing soaks. The backyard is of a decent size and designed for low maintenance, giving you more time to enjoy your surroundings rather than tending to the garden. This property is perfectly situated for convenience. A mere 2-minute drive will take you to Coles Woodlea and Yes Yes Indian Supermarket Woodlea, making grocery shopping a breeze. Various schools and childcare centers are just a 3-4 minute drive away, ensuring your children's education and care are within easy reach. For your healthcare needs, Palmers Medical Centre is only a 3-minute drive. Fitness enthusiasts will appreciate the close proximity to Anytime Fitness Centre, just 2 minutes away. This home offers the perfect balance of modern living, convenience, and comfort, making it an ideal choice for families looking to settle in a vibrant and well-connected community. Don't miss the opportunity to make this extraordinary property your home. Take action now and secure this fantastic property before it's too late! Visit one of our open houses or contact Dee on 0404 827 000 for more information. PHOTO ID IS A MUST AT ALL OPEN FOR INSPECTIONS. DISCLAIMER: All stated dimensions are approximate only. Particulars given are for general information only and do not constitute any representation on the part of the rental provider or agent. Please see the below link for an up-to-date copy of the Due Diligence Checklist: <http://www.consumer.vic.gov.au/duediligencechecklist>