

36 Woolhouse Lane, Gidgegannup, WA, 6083

House For Sale

Monday, 28 October 2024



36 Woolhouse Lane, Gidgegannup, WA, 6083

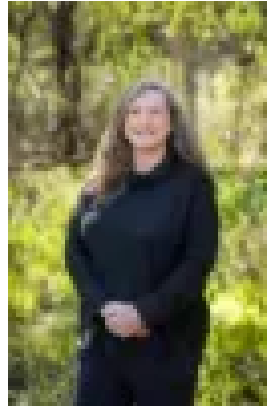
Bedrooms: 4

Bathrooms: 1

Type: House



Lindsay Earnshaw



Shirley Williams

5 Acres of Flexible Freedom

END DATE SALE: ALL OFFERS PRESENTED BY 2pm THURSDAY 7th NOVEMBER 2024 (the seller reserves the right to sell prior to the end date without notice).

Dreaming of country living? Need a block with a bit of space and hankering for a view across the timber tops? While this property isn't about glitz and glamour, what it will provide is a base for a life well-lived surrounded by the beauty of nature and endless possibilities. With plenty of room, the expansive block offers space for kids or pets to run free, roam, and possibly even help you set up a bit of a hobby farm. Your weekends spent pottering away in the gardens or planning out perhaps a secondary dwelling or getting stuck into renovations on the 2-storey abode just waiting for someone with a keen eye to come along and love it.

That cottage is a rustic country retreat. Built in 1984, it features an open-plan layout on the ground floor, where the living, dining, and kitchen areas flow seamlessly, creating a cosy and practical space. The kitchen, with its country charm, invites you to whip up hearty meals while soaking in the warmth from the slow combustion wood fire, perfect for those chilly Gidgegannup nights we are still experiencing in Springtime! The ground floor also includes a versatile fourth bedroom that could double as a fantastic work from home space, a separate laundry, and a bathroom, providing all the essentials for comfortable living. The high raked ceilings on the top floor add a sense of spaciousness, making the home feel airy and bright despite its modest size.

Features Include:

- 1984 Built hardi-plank and iron home
- 4 bedrooms
- 1 bathroom
- Open plan living downstairs
- Country kitchen
- New upstairs balcony
- Cosy slow combustion wood fire
- Split system air conditioning
- 6m x 6m powered shed
- 6kw solar panel system
- 20,000 gallon concrete water tank
- 5 acres of parkland cleared
- Fully fenced

The block itself is where this property really shows off with 5 acres of cleared parkland dotted with pretty crops of timber. It's a practical and fully useable block for whatever you're dreaming of. Horses? Easy. A few livestock? Totally doable. Or just a good block to grow your own produce, maybe think of a granny flat or pool, or a playground for the kids down the track. This land is as versatile as it is beautiful. Plus, it comes with a 6m x 6m powered shed, ideal for storage or as a workshop, while the 6kW solar panel system and a massive 20,000-gallon concrete water tank contribute to a touch more sustainable living. Just down the road is Gidge Central with the general store, local school, sporting facilities, and some of the best and most beautiful natural walking trails and National Parks in WA.

Say yes to this 2 storey hideaway on its pretty 5 acres.

For more information on 36 Woolhouse Lane Gidgegannup, or for friendly advice on any of your real estate needs, please call Team Lindsay on 0405 146 251.

* Disclaimer: the team at Earnshaws Real Estate has used our best endeavours to ensure the information here is accurate, but prospective purchasers should always make their own enquiries with the relevant authorities to verify the

information in this listing. We accept no liability for any errors, omissions or inaccuracies. All boundary lines, measurements and sizes on our images are approximate.