

39 Dickenson Place, Kirwan, Qld 4817



House For Sale

Wednesday, 19 June 2024

39 Dickenson Place, Kirwan, Qld 4817

Bedrooms: 4

Bathrooms: 2

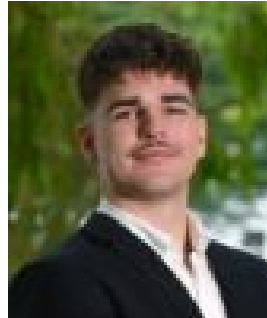
Parkings: 2

Area: 649 m2

Type: House



Nicky Faulks
0403023663



Ben Faulks
0747559559

Offers Over \$539,000

Are you searching for the perfect family home in a quiet, community focused neighbourhood? Look no further than this exceptional property in the heart of Greenwood Estate. Situated on a peaceful no through street and surrounded by quality homes, this home offers an abundance of space and modern conveniences perfect for growing families. Step inside and you'll be greeted by a large, open floor plan with separate living and dining areas, providing ample room to relax and entertain. The family-sized kitchen features a breakfast bench and good storage throughout. The dining zone will easily fit a good sized dining table and there's direct access outside to the undercover entertaining patio. The fully fenced yard provides a safe haven for children and pets, with paving to the rear boundary, manicured lawn, garden shed, and double side gate access for added convenience. The double garage completes the package, offering secure parking and storage. Situated within close proximity to the Avenues Tavern, local schools, and essential amenities, this home offers the perfect blend of tranquility and connectivity. Air conditioning, fans, and security screens ensure year-round comfort and peace of mind. This is an exceptional opportunity to secure a beautifully maintained family home in one of Kirwan's most sought-after pockets. Don't miss your chance - arrange an inspection today!

FEATURES:- Air conditioning and fans - Large floor plan with separate living and dining areas- Family sized kitchen with ample storage and breakfast bench- Spacious bedrooms with built-in wardrobes- Family bathroom features separate shower and bath, the ensuite has walk in shower- Internal laundry- Undercover entertainers patio- Double, automatic garage- Fully fenced yard, with double side gate access- Manicured gardens and lawns, 3x3 garden shed