

# 4 Glenample Place, Mernda, Vic 3754

## House For Sale

Wednesday, 3 July 2024

4 Glenample Place, Mernda, Vic 3754

Bedrooms: 3

Bathrooms: 2

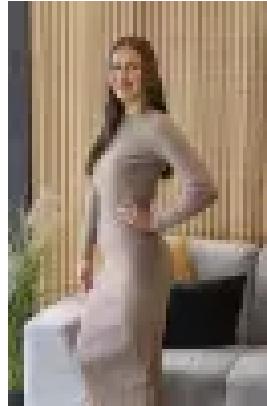
Parkings: 2

Area: 450 m2

Type: House



Ashlee Jade  
0397175372



Imogen Hammond  
0391111707

**SBSD Tuesday, 30 July at 6pm (unless sold prior)**

Experience the epitome of modern, low maintenance living in this home situated in a highly coveted estate. Conveniently located within walking distance to Hawkstowe Train Station and close proximity to Westfield Plenty Valley, Mernda Town Centre, esteemed schools, and the beautiful Plenty Gorge Parklands or take the mere stroll for breakfast at Two Beans at Carome Estate. This residence fulfills every contemporary lifestyle expectation. Showcasing three spacious bedrooms all with built in robes and the master bedroom boasting an ensuite and walk in robe. Well-appointed central kitchen including stainless steel quality appliances inclusive of 900mm stove top and dishwasher, ample cabinetry, adjacent meals/family room plus formal lounge upon entry. Step outside to a spacious undercover entertainment area ideal for all year round entertaining. This inviting outdoor space features a low-maintenance yard, perfect for hosting gatherings and enjoying the outdoors in any season. Further features include the comforts of ducted heating, evaporative cooling, split system unit x1, high ceilings, study with ample cabinetry, ceiling fan to the master bedroom, central bathroom, separate toilet, extensive downlights, ample storage, sizeable laundry, garden shed, water tank, RING doorbell, security cameras, double garage with internal access and rear roller door and so much more. Inspection is not to be missed!