

40 Katrina Crescent, Waterford West, Qld 4133



House For Sale

Wednesday, 19 June 2024

40 Katrina Crescent, Waterford West, Qld 4133

Bedrooms: 3

Bathrooms: 2

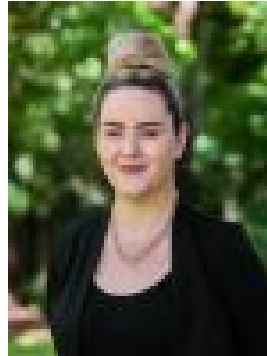
Parkings: 5

Area: 1619 m2

Type: House



Kate Handley
0732003200



Lisa Knowles
0732003200

Offers over \$889,000

Live the idyllic lifestyle you deserve at 40 Katrina Crescent, Waterford West. Nestled within a prestigious community of quality homes, this stunning double-story brick residence offers the perfect blend of space, comfort, and convenience. Picture this: after a long, fulfilling day, you find yourself on your back deck, a glass of wine in hand. You raise it in a toast to your new home, all while being mesmerized by the breathtaking rural landscape that stretches out before you. It's hard to believe this tranquil setting is just a short walk away from the vibrant Waterford Plaza Shopping Centre, the pristine Tygum Lagoon and Parklands.

Property Offers:

Upstairs :

- Three (3) spacious bedrooms all with new ceiling fans
- Enjoy the elegance of gleaming timber floors that flow throughout the entire level
- The open-plan living area invites relaxation and quality time with loved ones
- Prepare culinary delights in your kitchen, boasting ample storage and brand-new appliances
- Whether it's a casual meal or a formal dinner, the flexible dining area doubles as a second living space and extends effortlessly to the entertainment deck, perfect for gatherings
- Main bathroom with separate shower and bath
- Freshly painted throughout, this home is move-in ready, awaiting its new owners to create lasting memories

Downstairs:

- Features a huge 4.6 x 5.0m open plan area perfectly suited for teenagers retreat, business/office, studio the possibilities are endless
- Renovated bathroom with its own toilet and shower
- Separate access from the house
- Internal Laundry
- Huge amount of storage also available under the house separate for this area

Need a dedicated space for toys or extra storage? The property boasts side access leading to a substantial shed and an adjacent double carport provides additional vehicle accommodation, while fantastic wide side access caters to boats, trucks, machinery, or trailers.

Nestled in the picturesque "Lifestyle Precinct" of Waterford West, this exquisite property is situated at the end of a serene cul-de-sac. Impeccably maintained and exuding charm, this home requires no additional work, making it the perfect choice for its new owners to move right in and start enjoying the tranquil lifestyle it offers.