

42A Clydebank Road, Edithvale, Vic 3196

MAK REALTY

House For Sale

Saturday, 29 June 2024

42A Clydebank Road, Edithvale, Vic 3196

Bedrooms: 4

Bathrooms: 2

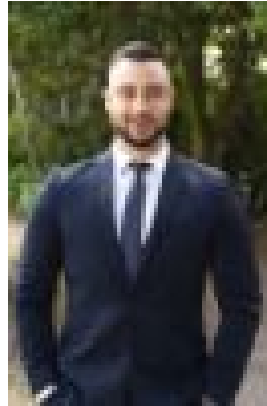
Parkings: 3

Area: 395 m2

Type: House



Claude Makdesi
0405342244



Demetrios Alexandris
0410813777

THE ONE | \$1.4M - \$1.5M EOI Closing 30th July

Welcome to 42A Clydebank Road Edithvale. Delivering perfection at every turn, this exquisitely renovated family residence offers an abundance of natural light, stylish low-maintenance spaces and a lifestyle of complete ease steps from shops, beaches and public transport. Engineered European Oak floorboards offer a streamlined flow throughout the home, drawing you through to the spacious lounge and dining domain, accompanied by a sleek kitchen showcasing stone benchtops Bosch appliances (induction cooktop, oven and semi-integrated dishwasher), double undermount sink plus a breakfast bench, before spilling outside onto a low-maintenance yard with Bluestone entertaining zone. All four bedrooms boast plush carpeting and robes, including the private upstairs parent's retreat, featuring a living room plus a bedroom with walk-in-robe and ensuite. Additionally complemented by a downstairs family bathroom with twin vanity, shower, bathtub and toilet, laundry with stone workbench, zoned ducted heating/air conditioning, alarm plus a double lock-up garage.

THE SPECIFICS

- Private parent's retreat featuring a living room, bedroom with walk-in-robe and ensuite.
- Three extra robed bedrooms; serviced by a twin vanity family bathroom.
- Lounge and dining room adorned with engineered Oak floorboards.
- Sleek and spacious kitchen incorporating stone benches, Bosch appliances (induction cooktop, oven and semi-integrated dishwasher) plus a breakfast bench.
- Low-maintenance yard with lush green lawn and Bluestone entertaining zone.
- Full-sized laundry with stone workbench.
- Zoned ducted heating and refrigerated air conditioning, alarm plus a double lock-up garage.
- Large multi-use area adjacent to garage providing space for a boat, trailer, caravan or an additional car.
- Electric gate providing extra security and privacy.

THE LOCATION

- Meters from the beach, local shops and Edithvale Train Station.
- Walk to Regents Park, Edithvale Recreation Reserve and golf courses.
- Near Edithvale Primary, Mordialloc College and numerous highly-desired private and public schools.
- Enjoy easy access to Chelsea Shopping Village and major roads.

THE CLOSE Exquisitely renovated and enviably positioned mere meters from the beach, shops and transport, 42A Clydebank Road Edithvale, delivers the perfect family environment. This completely renovated home is boasting four bedrooms, two bathrooms, dual living spaces and a brilliant Bluestone entertaining zone.

THE AGENTS Claude Makdesi | 0405 342 244 Demetri Alexandris | 0410 813 777

Disclaimer: Whilst every care has been taken to verify the accuracy of the details in this advertisement, MAK REALTY cannot guarantee its correctness. Prospective buyers need to take such action as is necessary, to satisfy themselves of any pertinent matters.