

45 Nymboida Crescent, Ruse, NSW 2560



House For Sale

Tuesday, 25 June 2024

45 Nymboida Crescent, Ruse, NSW 2560

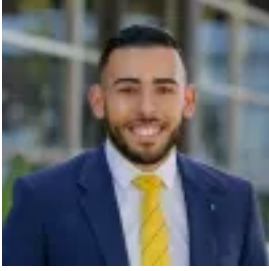
Bedrooms: 3

Bathrooms: 1

Parkings: 1

Area: 562 m2

Type: House



Mohamed Lababidi

0478650681

\$699,990 - \$769,989

Welcome to 45 Nymboida Crescent, Ruse, a charming single-story home situated on a generous 562 sqm block. This inviting residence boasts three spacious bedrooms, providing ample space for a growing family or those seeking extra room for guests and a home office. The well-maintained bathroom features contemporary fittings, ensuring comfort and style. The home's functional layout includes a light-filled living area that seamlessly connects to the dining and kitchen spaces, making it perfect for everyday living and entertaining. Outside, the property offers a single carport and a spacious backyard, ideal for outdoor activities and entertaining. Additionally, the property backs onto a serene nature reserve, providing a beautiful and tranquil backdrop for your daily life. Located in a peaceful and family-friendly neighbourhood, 45 Nymboida Crescent is close to local schools, parks, and amenities, offering a perfect blend of convenience and tranquillity. Key Features Include: - Ample Kitchen Storage and Bench Space - Split System Airconditioning - Skylight - Multiple Living Areas - Built in Wardrobes - Floorboards and Tiles Throughout - Outdoor Covered Deck Location Via Google Maps - Ruse Public School - 1km - Worrell Park - 800m