

46 Stanger Street, Yarraville, Vic 3013



House For Sale

Wednesday, 10 July 2024

46 Stanger Street, Yarraville, Vic 3013

Bedrooms: 3

Bathrooms: 2

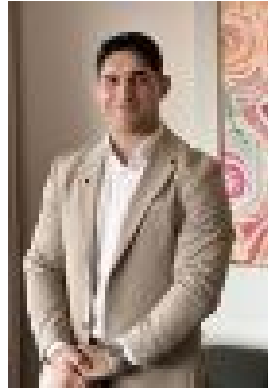
Parkings: 3

Area: 465 m2

Type: House



Joseph Luppino
0383987800



Max Marcialis
0422649411

\$930,000 - \$1,020,000

Ready to welcome you with comfortable modern interiors and superb outdoor entertaining, this renovated three-bedroom, two-bathroom period weatherboard promises loads of outdoor space, easy access to the famed Yarraville lifestyle, and exciting scope for extension (STCA). -?renovated period home offering easy living, superb entertaining, and exciting potential for the future-?move-in-ready with space to extend (STCA)-?spacious open-plan living showcasing sun-drenched living, dining, and lounge zones joined by a well-appointed modern kitchen with Smeg appliances-?open-plan living opens to a large alfresco entertaining deck and big back garden-?main bedroom with full-width built-in robe and luxe, fully-tiled ensuite-?second bedroom with built-in robe-?main bathroom with shower over bath and discreetly incorporated European laundry-?bright, carpeted detached bedroom/office + shed spaces suitable for a variety of purposes, including wine storage, workshop space and general storage-?hardwood floorboards throughout-?comfort assured by split-system heating/cooling-?enviable off-street parking – secure garage, carport, and plenty of driveway space-?perfectly positioned in a welcoming pocket of Yarraville within enviable proximity of every convenience! Walk to Rocco's Deli for gourmet supplies and drive to Coles and a variety of retailers at Yarraville Square in just four minutes. Altona Gate Shopping Centre offers vibrant big-name shopping and a choice of supermarkets six minutes from home, while Yarraville Village invites you to immerse yourself in its renowned atmosphere and fabulous café culture a five-minute drive or easy bus ride away. Catch a movie at the iconic Sun Theatre, meet friends at one of the many restaurants and cosy wine bars, and indulge in the village's boutiques and gourmet grocers. Stroll to Angliss Reserve for wide open space and a much-loved playground and enjoy walking distance proximity to Cruickshank Park, where Stony Creek winds its way through stunning parkland-?only 11.4 km from the CBD with easy road access, or cycle to Yarraville Station in 11 minutes for regular city-bound trains-?zoned to Wembley Primary School (15-minute walk) and Bayside College (eight-minute drive)