

47 Timberside Drive, Beaconsfield, Vic 3807



House For Sale

Wednesday, 19 June 2024

47 Timberside Drive, Beaconsfield, Vic 3807

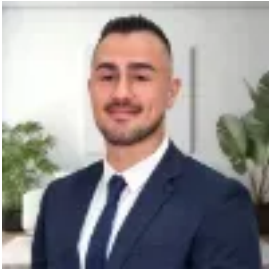
Bedrooms: 4

Bathrooms: 2

Parkings: 4

Area: 1344 m2

Type: House



Michael Panayi
0397071400



Hayley Taufa
0397071400

\$1,860,000 - \$1,980,000

Barry Plant Berwick is proud to present 47 Timberside Drive. This extraordinary residence, nestled on 1,344sqm in the heart of Beaconsfield, offers impeccable quality and a lifestyle opportunity unlike any other. This contemporary masterpiece features 4 bedrooms, including a master suite adorned with plush carpeting. The ensuite is tastefully designed, showcasing floor-to-ceiling tiles, a floating vanity, a spacious exposed shower, LED mirrors with steel finished taps, and a meticulously crafted walk-in robe complete with LED lighting and a built-in makeup vanity. Three additional bedrooms, all with built-in robes, plus a study, ensure ample space for comfort and functionality. The home's thoughtfully designed floor plan includes three living rooms, one of which is a formal lounge boasting a stunning gas fireplace—a serene retreat on the lower level of the home. An enclosed cinema room with projector and screen adds to the allure. The kitchen is a standout feature with high-end finishes such as soft-close drawers and cupboards, an induction stove top, integrated dishwasher, and Neff German Appliances, including a self-cleaning oven and steam oven, all complemented by stone benchtops. A butler's pantry with a sink and consistent LED lighting provides an ideal space for meal preparation. The adjacent dining area and built-in bar with wine cooler create a welcoming family environment. Outside, a solar-heated in-ground magnesium fibreglass pool awaits, accompanied by a pool house with lighting, ceiling fan, built-in BBQ, and mounted TV—an ideal spot for entertaining. An alfresco area at the rear of the property offers perfect outdoor dining options. Additional amenities include a large 2.5 car garage and a spacious shed with high roofing and direct side access, both finished with high-grade epoxy flooring. The home also having a full CCTV and Alarm system throughout. Situated in one of the most sought-after pockets of the suburb, Timberside Drive offers easy freeway access, proximity to local cafes, restaurants, parks, and top-tier schools in Victoria. Opportunities like this are rare—don't miss your chance to inquire now!