

**48 HAWTHORNE STREET, Sadliers Crossing, QLD,
4305**



House For Sale

Wednesday, 25 September 2024

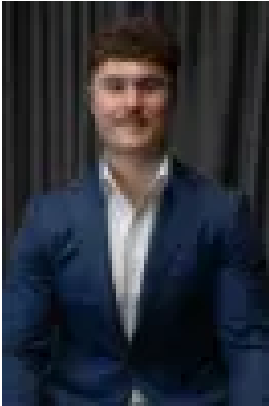
48 HAWTHORNE STREET, Sadliers Crossing, QLD, 4305

Bedrooms: 3

Bathrooms: 1

Parkings: 2

Type: House



Charles Kimmorley
0477652889

CHARMING RENOVATED ABODE IN SOUGHT-AFTER SADLIERS CROSSING

Welcome to 48 Hawthorne Street, Sadliers Crossing—where modern living effortlessly blends with timeless appeal in one of Ipswich's most sought-after neighbourhoods. This beautifully renovated 3-bedroom, 1-bathroom home is set on a generous 862m² block, offering stunning views and a serene, leafy outlook from the expansive back deck. Whether you're enjoying your morning coffee or unwinding at sunset, this space invites relaxation and a deep connection with nature.

Renovated with a neutral palette and to an exceptional standard, this home was lovingly restored with long-term living in mind, not as a quick flip. Every detail has been thoughtfully considered, creating a stylish and functional living space. The modern kitchen is a standout, featuring sleek cabinetry, quality appliances, and ample bench space, making it perfect for everyday living and entertaining.

The bright, open-plan living areas flow seamlessly onto the outdoor deck, enhancing the home's connection to its tranquil surroundings. Two of the three spacious bedrooms are equipped with built-in wardrobes for convenience, and the new carpets and updated flooring throughout provide a fresh, cohesive feel that adds warmth and comfort to every corner.

This move-in ready home will appeal to a wide range of buyers, from those downsizing or upsizing, to investors and city dwellers seeking more value for their money. Despite its proximity to the Ipswich CBD and the private schooling precinct, the property offers a sense of privacy and seclusion, with uninterrupted views of the lush greenery and treetops of the nearby nature reserve.

Both the front and back yards serve as blank canvases with no easements, offering plenty of potential for future expansion. Whether you dream of adding a shed, a pool, or more garden space, the 862m² allotment provides ample room to grow. The freshly updated cubby house is a perfect retreat for children or pets.

Sadliers Crossing is a highly desirable suburb, known for its beautiful neighbouring properties and strong sense of community. This is more than just a property—it's a lifestyle. With the continued development of the CBD and the Nicholas Street restaurant precinct, Ipswich is becoming an increasingly desirable city to call home. Whether you're a first-time buyer or looking for your forever home, 48 Hawthorne Street offers the perfect setting to start your next chapter.

Don't miss the opportunity to make this exceptional property your own.

Listing agents: Brady Chant & Charles Kimmorley

Don't be disappointed and call us now – We are waiting for your call.

NGU Real Estate Ripley – The Kimmorley Group

Results Speak Louder Than Words

Disclaimer:

NGU Real Estate Ripley | TKG has taken all reasonable steps to ensure that the information contained in this advertisement is true and correct but accept no responsibility and disclaim all liability in respect to any errors, omissions, inaccuracies or misstatements contained. Prospective purchasers should make their own enquiries to verify the information contained in this advertisement.

Disclaimer:

Disclaimer:

NGU Real Estate Ripley | TKG has taken all reasonable steps to ensure that the information contained in this advertisement is true and correct but accept no responsibility and disclaim all liability in respect to any errors, omissions, inaccuracies or misstatements contained. Prospective purchasers should make their own enquiries to verify the

information contained in this advertisement.