

5 Dimitri Street, Goulburn, NSW 2580

Raine&Horne.

House For Sale

Wednesday, 19 June 2024

5 Dimitri Street, Goulburn, NSW 2580

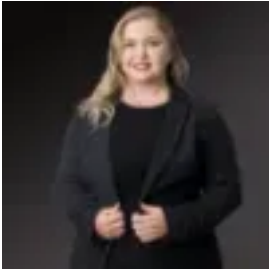
Bedrooms: 4

Bathrooms: 2

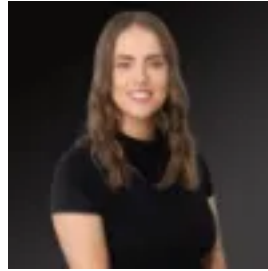
Parkings: 2

Area: 990 m2

Type: House



Peta Beadman
0424164676



Stephanie OBrien
0248219088

\$849,000

Perched on an elevated 990sqm block, 5 Dimitri Street offers an unparalleled living experience in Goulburn. This expansive property seamlessly blends comfort, style, and functionality, making it the perfect sanctuary for families. The large floorplan, featuring two distinct living rooms plus a dining room, provides ample space for relaxation, entertainment, and everything in between. The open-plan kitchen and meals area, bathed in natural light, forms the heart of the home, fostering a warm and inviting atmosphere. Outdoor enthusiasts will appreciate the well-designed exterior spaces of this property. The completely enclosed yard, accessible via large gates at the rear, is ideal for both pets and family activities. A large garden shed with a concrete floor and power offers abundant storage and workspace for any project. The covered alfresco area is perfect for peaceful entertaining, allowing you to enjoy the serene surroundings in comfort and style. Additionally, the double garage with internal access and a roller door ensures convenience and security. The interior accommodations are equally impressive. Each of the four bedrooms comes with built-in robes, providing ample storage space and a tidy living environment. The master suite is a true retreat, boasting a walk-in robe and a private ensuite. Light and airy throughout, this home is designed to maximize comfort and functionality, making it a haven for its residents. 5 Dimitri Street is more than just a house; it's a lifestyle. With its spacious layout, thoughtful design, and excellent outdoor amenities, this property is perfect for those seeking a blend of modern living and tranquil surroundings. Whether you're entertaining guests or enjoying a quiet evening at home, this residence offers everything you need to live life to the fullest. Fast features: * Situated on an elevated 990sqm block* Access to the rear yard with large gates* Large floorplan with two living rooms and dining room* Double garage with internal access and roller door* Large garden shed with concrete floor and power* Covered alfresco for peaceful entertaining* Open plan kitchen and dining* Light and airy* Four bedrooms, all with robes* Master with ensuite and walk in robe* Completely enclosed yard, ideal for pets or family