

51 Lockheed Drive, Schofields, NSW 2762

House For Sale

Thursday, 28 March 2024

AMIT KUMAR
PROPERTY | POWERED BY SMILE ELITE

51 Lockheed Drive, Schofields, NSW 2762

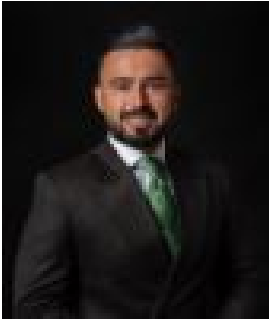
Bedrooms: 4

Bathrooms: 3

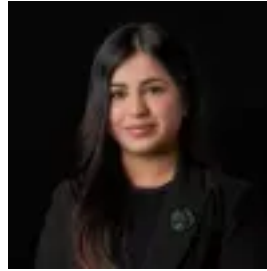
Parkings: 1

Area: 300 m2

Type: House



Amit Kumar
0288964336



Siya Sachdeva
0288964336

Price Guide \$1,100,000

Situated in one of the most sought-after pockets of Schofields, within the ever-popular Akuna Vista, this stunning home is meticulously crafted. It boasts a harmonious blend of sophistication and practicality. Step inside to discover the stylish finishes throughout. With an open plan layout of the kitchen, living and dining area, the home maximises both comfort and functionality for the family. Not to mention the abundance of natural light from the large windows which flows between spaces and out through to the undercover alfresco and backyard. The well-appointed kitchen features quality stainless steel appliances, stone waterfall benchtop, five burner gas cooktop and 900mm oven, stylish lights, tiled splashbacks, an eat-in breakfast bar and plenty of storage space. The accommodation consists of four great-sized bedrooms, three of which have their own built-in robes. There is also a bedroom and a full bathroom downstairs ideal for multigenerational families. The master bedroom is a true retreat, complete with a private ensuite bathroom, and walk-in wardrobe. Features you will love:- 6.6KW Solar panels with Fronius inverter- LED lights throughout the home- Ducted airconditioning- Floorboards throughout common areas- Rumpus room upstairs - Three full bathrooms- Outdoor undercover alfresco and decking area- Remote controlled, single locked up with internal access and storage- Epoxy flooring and storage cupboards in the garage

Location Highlights:- 5-minute walk to Nirimba Fields Primary School - 6 minutes drive to Schofields Train Station and Schofields Shopping Village- Within a 5-minute walk to the upcoming Akuna Vista Parks, playfield, school and shopping centre- 8 minutes drive to Tallawong Metro Station- 10 minutes drive to Rouse Hill Town Centre- Easy access to M7 Motorway and Sydney CBD

Disclaimer: All information contained herein is obtained from property owners or third-party sources which we believe are reliable. We have no reason to doubt its accuracy, however, we cannot guarantee it. All interested person/s should rely on their own enquiries.