

58 Bishampton Circuit, Logan Reserve, Qld 4133



Sold House

Tuesday, 19 March 2024

58 Bishampton Circuit, Logan Reserve, Qld 4133

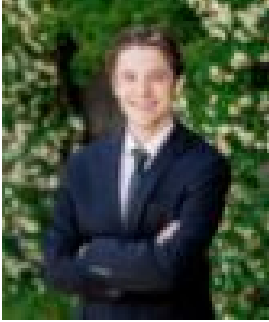
Bedrooms: 5

Bathrooms: 3

Parkings: 2

Area: 481 m²

Type: House



Riley Dunne
0424793528



Lisa Dunne
0420208891

\$832,000

Don't miss this opportunity to secure a dual tenancy freestanding investment on a 481m² allotment, in the suburb of Logan Reserve, sure to be snapped up quickly. EXPRESSION OF INTEREST CLOSING WEDNESDAY MARCH 27TH 12:00PM IF NOT SOLD PRIOR

Unit 1 Features: * 3 Bedrooms, master with ensuite and air conditioning * 2 Bathrooms * Good size open plan living/dining with air conditioning * Rental - \$460.00 per week * Tenancy expires - 28/11/2024

Unit 2 Features include: * 2 Bedrooms * 1 Bathroom * Open plan living off the kitchen * Rental - \$390.00 per week * Tenancy expires - 02/09/2024

Logan Reserve is conveniently located near the Logan & Gateway Motorways, providing quick and easy access to Brisbane CBD and airport (approx 30 minutes), the Sunshine Coast and the Gold Coast. *approx

Please contact the listing agent for more details by clicking on the link above.

Disclaimer: Ray White has not independently checked any of the information we merely pass on. We make no comment on and give no warranty as to the accuracy of the information contained in this document which does not constitute all or any part of any offer or contract by the recipient. Prospective purchasers / lessees must rely on their own enquiries and should satisfy themselves as to the truth or accuracy of all information given by their own inspections, searches, inquiries, advices or as is otherwise necessary. No duty of care is assumed by Orchid Avenue Realty trading as Ray White Surfers Paradise Commercial divisions toward the recipient with regard to the use of this information and all information given is given without responsibility.