

# 5A Forth Street, Woollahra, NSW, 2025



## House For Sale

Friday, 27 September 2024

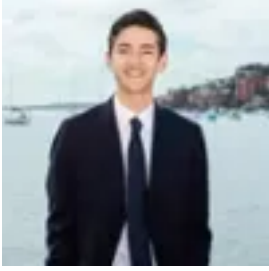
5A Forth Street, Woollahra, NSW, 2025

**Bedrooms: 4**

**Bathrooms: 4**

**Parkings: 2**

**Type: House**



Raj Arnott

## Designer Family Sanctuary with Separate Studio & Double Parking in Dress-Circle Street

Facing north and classically elegant from the front, it reveals a wonderfully spacious design with free-flowing living and dining areas enhanced by Herringbone Oak parquet flooring, high ceilings and a soothing neutral palette.

A gourmet chef's kitchen serves as the heart of the home and features exquisite Italian Calacatta Monet marble benchtops, Miele induction cooktop, Zip HydroTap plus an integrated fridge and freezer, integrated dishwasher, extended bench banquet seating and abundant cupboard storage.

Bi-fold doors retract to allow a seamless transition to a private sandstone entertainment courtyard with a tranquil water feature, while a highlight is the separate self-contained studio above the garage, perfect for guests/in-law accommodation or a teen retreat.

Upper-level accommodation comprises three well-sized bedrooms, two of which are appointed with built-in wardrobes including the master with a chic ensuite and a north facing sunlit balcony. The second bedroom features French doors opening to a rear breezy balcony and there is a deluxe main bathroom.

Additional features include ducted and reverse cycle air conditioning, extensive storage, video security intercom plus an internal laundry, guest powder room, newly installed skylights, pure wool New Zealand carpet and newly installed Marine grade carpeting in the garage.

With dual street frontage and wide rear access via Pickering Lane to a double remote garage, this stunning family home is positioned footsteps to Woollahra Public School and buses, while within walking distance of village shops, delis and cafés, Centennial Park and Edgecliff Station.

- Four bedrooms, Four bathrooms, Two car
- Striking architectural design with flowing living/dining
- Chef's kitchen w/ Italian Calacatta Monet marble benchtops
- Integrated fridge/freezer, Zip HydroTap
- Miele induction cooktop/oven and integrated dishwasher
- Italian marble banquet seating, bi-fold doors to the rear
- Seamless flow to large sandstone entertainer's courtyard
- Master w/ deluxe ensuite opens to n/facing sunlit balcony
- Rear bedroom features French doors opening to balcony
- Tranquil water feature and beautifully landscaped gardens
- European Oak parquet floors, ducted & RC air conditioning
- Separate studio above garage, ideal for guests/teen retreat
- Newly installed skylights, pure wool New Zealand carpet
- Wide rear access via Pickering Lane to double remote garage
- Newly installed Marine grade carpet in the double garage
- Deep block in prized street surrounded by quality homes
- Level walk to Queen Street Village, Woollahra Public School
- Minutes to Edgecliff Station, Centennial Park, Double Bay