

6 Benson Street, Spring Mountain, Qld 4300



House For Sale

Tuesday, 25 June 2024

6 Benson Street, Spring Mountain, Qld 4300

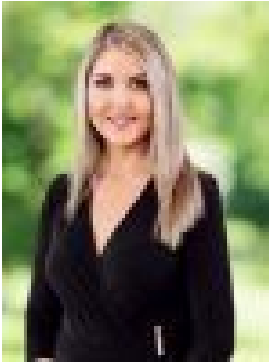
Bedrooms: 4

Bathrooms: 2

Parkings: 2

Area: 400 m2

Type: House



Lee Warren

0439731464

OFFERS OVER \$1,299,000

This is a guaranteed investment opportunity not to be missed! Guaranteed leaseback of \$1,140.00 per week for the life of the Display Village at Springfield Rise, Spring Mountain just 35 minutes from Brisbane's CBD. Springfield Rise is conveniently located between the shopping, business, health and education precincts of Springfield Central. Immerse yourself in coastal elegance with this double-storey home situated on a generous 400m² homesite in the tranquil community of Spring Mountain, this residence seamlessly blends sophistication with modern comfort. Experience the tranquility of coastal living with airy spaces, neutral tones, and timeless finishes. This home features 4 generously sized bedrooms, 2 beautifully appointed bathrooms, and a convenient powder room. The large master bedroom offers a walk-in robe, providing ample storage and a touch of luxury. Designed for both relaxation and functionality, the home includes two distinct living areas, perfect for family gatherings and quiet moments. Additionally, there is a separate office/study, ideal for working from home or managing daily tasks. The kitchen is a chef's delight, equipped with a scullery for additional storage and prep space, enhancing your culinary experience. The light oak timber flooring throughout adds warmth and elegance, creating an inviting atmosphere. The outdoor entertaining area is perfect for hosting memorable gatherings, seamlessly extending your living space to the outdoors. Experience a lifestyle of comfort and style in this meticulously designed home. 6 Benson Street is more than just a house; it's a place where coastal charm meets modern luxury, providing the perfect setting for your family's next chapter.

LOCATION & TRANSPORT-Ipswich CBD 17km -Brisbane CBD 33km -Gold Coast 81km -40min train ride to Brisbane CBD **SPORTS & OUTDOOR** -Springfield Central Sports Complex-13 neighbourhood parks-Three district parks **EDUCATION**-Spring Mountain State School -Quality childcare and preschools-11 public and private primary and secondary schools-University of South Queensland-TAFE Queensland South-West **SHOPPING & LIFESTYLE**-Neighbourhood centre -Orion Springfield Central **MEDICAL**-Mater Private Hospital-Local medical facilities

Why invest in a Hudson Display Home? Hudson Homes display homes offer great rental returns. The perfect addition to your investment portfolio. The property is a working display home with Hudson Homes leasing back the property for the life of the display. Having a reputable company as your tenant provides the security of knowing the rent will be paid on time, every time on a monthly basis. Hudson Homes' display homes are generally located in display villages in the most popular new land estates in growth regions. Surrounded by new homes in key locations, they are more likely to attract quality tenants and premium rent after the leaseback period ends. As the tenant, Hudson Homes will fully maintain the property inside and out for the life of the lease. Hudson Homes covers all utility costs during the life of the display home and arranges for the property to be professionally cleaned once per week. Hudson Homes' display homes generally consist of a very high specification of luxury inclusions and finishes selected by qualified interior designers, combined with professional landscaping to maximise the value and appeal of your property. For more information please contact Lee Warren - 0439 731 464.