

6 Bethany Rise, Hillbank, SA, 5112

NOAKES
NICKOLAS

House For Sale

Friday, 30 August 2024

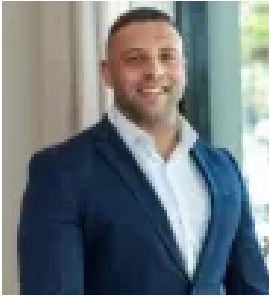
6 Bethany Rise, Hillbank, SA, 5112

Bedrooms: 3

Bathrooms: 1

Parkings: 2

Type: House



Jorden Tresidder
0881663989

Quality family home in an idyllic setting.

Best offers By 16/9 at 1pm - Unless Sold Prior.

Set within a tightly held, no-through enclave that ends in the rolling greenspace of Whitford Bushland Reserve, this peaceful three-bedroom residence creates a carefree haven where you can truly feel at home.

From the spacious master retreat to both formal and open plan living zones, there is so much light-filled space within the footprint for a family to spread out or to make an attractive home base for prospective tenants.

Low-maintenance grounds complete the rest of the spacious allotment, allowing you to enjoy the many abundant reserves on your valuable weekends instead of picking up the power tools.

Your leafy surrounds will have you feeling secluded and at peace, but when you do feel the need to venture out you have all the public transport, shopping amenities and outdoor recreation you could ever need at your beck and call.

Features:

Significant updates throughout

Dual living zones

Granite benchtops

Walk-in robe to master, built-in to bedrooms 2 & 3

Three-way bathroom with direct master access

Secure carport behind roller door

North-facing backyard, outdoor entertaining & garden shed

Ducted R/C air conditioning (replaced 2022)

Lifestyle:

850m from bus stop on Kinkaid Road

5-minutes from Fremont Park, Elizabeth City Centre & train station

Zoned for Playford International College, proximity to Pinnacle College, Elizabeth East & Craigmore South Primary

Just 30-minutes from the CBD

Rates:

City of Playford

Torrens Title

Council \$2045PA

SA Water \$166PQ

ES Levy \$90PA

Disclaimer: all information provided has been obtained from sources we believe to be accurate, however, we cannot guarantee the information is accurate and we accept no liability for any errors or omissions. If this property is to be sold via auction the Vendors Statement may be inspected at Level 1, 67 Anzac Highway, Ashford for 3 consecutive business days and at the property for 30 minutes prior to the auction commencing. RLA 315571.