

**6 Mcintosh Street, Whyalla Playford, SA 5600**



**House For Sale**

Monday, 8 July 2024

6 Mcintosh Street, Whyalla Playford, SA 5600

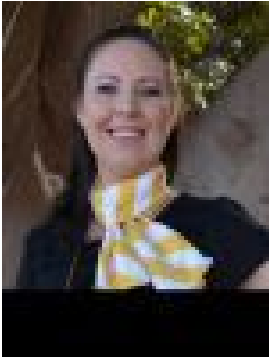
**Bedrooms: 3**

**Bathrooms: 1**

**Parkings: 2**

**Area: 922 m2**

**Type: House**



Leah Kirk

0432131489

**\$359,000**

Discover your perfect home in Whyalla Playford with a family-friendly design both inside and out offering you comfortable lifestyle living. For a joyful living experience, this home showcases a thoughtful layout boasting 3 bedrooms, 1 bathroom, a beautifully designed kitchen, a generous size shed plus ducted evaporative air conditioning. Wonderfully located on an impressive allotment size of 922m<sup>2</sup>, you are welcomed with a 1952 brick home presenting neat and tidy gardens, exterior window roller shutters, an open carport plus a privacy screen to the verandah entryway. Stepping inside the home you will notice the light and bright design to the living and kitchen area featuring downlights, vertical blinds, a split system air conditioner to the living space and is finished off with sleek tiled flooring. From the living space opens up to a well designed kitchen set in style featuring stand-out white cabinetry finished with subway tiling splashback, a built-in oven, an induction cooktop and a rangehood. Moving down the hallway flows 3 bedrooms designed for your comfort and are all complete with carpeted flooring, blinds, ceiling fans for the warmer months plus a wall-to-wall built-in robe to bedroom 1. To the hallway you are also met with the bathroom set in a functional design featuring a walk-in shower and a corner vanity and is finished with a skylight for natural lighting. Moving through to the laundry and toilet area which continues the tiled flooring and places modern cabinetry offering plenty of storage space, which then leads you to the generous size laundry with additional cabinetry and sink. Stepping outside to the rear outdoors places an outdoor entertaining area featuring a pergola and concrete flooring which overlooks the impressive size rear yard featuring neat and tidy gardens. Flowing from the open carport is a generous size shed complete with concrete flooring and lights. This home includes a high adaptable floor plan and many desirable features to enhance the joys of living plus is located in a desirable location of Whyalla Playford being within close proximity to schools, shops and transport. Don't miss out on this great opportunity and contact Leah Kirk today. Council Rates: Approximately \$2,282.63 per annum Rental Appraisal: Available upon request Additionally, when looking at properties it's important to have confidence in how much you can borrow. Ray White has partnered with Loan Market who can make this simple and stress free for you. As our customer, you'll receive a complimentary, obligation free chat with our local broker to discuss your options and tailor a lending solution to suit your needs. If you would like to speed up the process, click on the link below to get started today. <https://broker.loanmarket.com.au/natasha-davis/contact/> Disclaimer: We have obtained all information in this document from sources we believe to be reliable; However we cannot guarantee its accuracy and no warranty or representative is given or made as to the correctness of information supplied and neither the owners nor their agent can accept responsibility for error or omissions. Prospective purchasers are advised to carry out their own investigations. All inclusions and exclusions must be confirmed in the Contract of Sale.