

6 Royal Avenue, Heathmont, Vic 3135



House For Sale

Sunday, 23 June 2024

6 Royal Avenue, Heathmont, Vic 3135

Bedrooms: 3

Bathrooms: 1

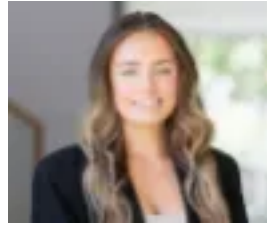
Parkings: 2

Area: 1502 m2

Type: House



Marcus Lim
0433044038



Ella Rait
0424669181

\$1,150,000 - \$1,200,000

Displaying a serene outlook and bright future, this beautifully elevated and architecturally designed family home rests on a 1502sqm approx. allotment and captures an effortlessly warm and inviting ambience for families to cherish, whilst offering incredible scope for future updates (STCA). Ready for instant enjoyment, the appealing layout leads from a welcoming entry foyer through to the light-filled lounge room that's adorned with high ceilings, contemporary floorboards and large windows that draw your eye out to the tranquil treed aspects, with an adjoining dining zone leading out onto a superb entertaining deck. Perfect for preparing family meals, the kitchen and meals zone offers ample bench and cupboard space plus quality appliances, while a separate family room rests at the rear of the home and steps out onto the large terraced backyard. The bedroom configuration comprises three freshly carpeted bedrooms; two featuring built-in robes and serviced by a bathroom (vanity and bath), shower room, separate toilet and large laundry with toilet that's conveniently fitted with a heating duct, making it ideal for drying clothes in the rainy season. Notably appointed with high ceilings, new central ducted heating (replaced in 2023), split system air conditioning, window awnings, single carport plus a single garage with substantial under house storage. The location is simply superb and offers easy access to Herman Pump Reserve, Heathmont Shopping Village, buses, Heathmont Train Station, Bedford Rd shops, Wombolano Park, Great Ryrie Primary School, Eastwood Primary School, Aquinas College, Tintern Grammar, Ringwood Secondary College (zoned), Eastland Shopping Centre and Eastlink.