

6 Skyline Cres, Carindale, QLD, 4152



House For Sale

Wednesday, 14 August 2024

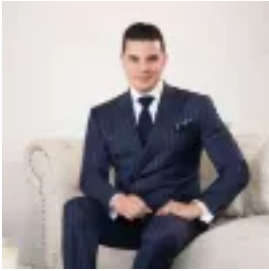
6 Skyline Cres, Carindale, QLD, 4152

Bedrooms: 5

Bathrooms: 2

Parkings: 2

Type: House



Will Torres

0738432938

Elegance and Serenity with Stunning City Views

Discover the epitome of refined luxury in this exquisite residence, perfectly positioned in one of Carindale's most desirable estates. Meticulously crafted by McCarthy Homes, this custom-built masterpiece sits on an elevated 550sqm block, offering unparalleled privacy and breath taking city vistas.

Stepping through grand double doors, you are welcomed into a realm of sophistication. The upper level features warm Finlayson blackbutt timber floors and 2.7m ceilings, creating an ambiance of elegance and comfort.

The free-flowing lounge and dining areas effortlessly transition to an expansive entertainer's deck, ideal for both relaxed gatherings and sophisticated soirees.

The gourmet kitchen is a chef's dream, equipped with Caesar stone benchtops, a convenient dumbwaiter, and top-of-the-line Miele appliances. This culinary space seamlessly connects to the deck, where you can savor stunning district views and the dazzling city skyline.

On the ground floor, you'll find a thoughtfully designed space perfect for family and guests. This level boasts a generous living area, a private study, and 3m high ceilings, offering a comfortable and functional environment. Step outside to the serene alfresco terrace, featuring locally sourced Stanthorpe granite, and enjoy the inviting Magna Pool (magnesium), a standout feature of this remarkable home.

The upper level also houses a luxurious master suite, complete with a spacious walk-in robe and a stylish ensuite, as well as a versatile media room for ultimate relaxation.

The lower floor includes three additional bedrooms, each with built-in robes. These rooms are serviced by a beautifully appointed bathroom with a walk-in shower, separate vanity, and toilet.

Additional Highlights

- Double remote-controlled garage with built-in storage and garden shed
- Ducted air-conditioning and ceiling fans throughout
- Crimsafe security screens and a state-of-the-art alarm system
- Solar power system, water tank, and tinted windows for added comfort

Located in a serene estate with proximity to esteemed schools like Citipointe College and Belmont State School, this home also offers easy access to tranquil parklands, walking tracks, and playgrounds. With Pacific Golf Club just minutes away, Westfield Carindale a short 7-minute drive, and the CBD a convenient 25 minutes away, this residence is perfectly positioned for both relaxation and convenience.