

68 King Edward Avenue, Albion, Vic 3020

Douglas**Kay**

House For Sale

Thursday, 11 July 2024

68 King Edward Avenue, Albion, Vic 3020

Bedrooms: 3

Bathrooms: 2

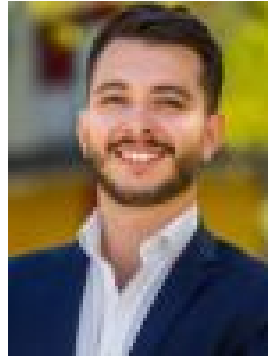
Parkings: 2

Area: 261 m2

Type: House



Justin Luciew
0407540678



Peter Kay
0401532886

Brand New | 261m2 Land | \$780,000 - \$820,000

This brand-new, exquisite townhouse captivates with its stunning exterior, ensuring a lasting first impression. Enjoy the added benefit of a separate title, freeing you from the burden of body corporate fees. The home perfectly blends functionality and elegance with its remarkable architectural layout. Upon entering, you'll experience the pinnacle of modern design in the expansive open-plan living, dining, and kitchen area. This seamlessly integrated space overlooks a charming courtyard featuring a beautiful timber deck. Abundant natural light floods the area, creating an inviting atmosphere perfect for relaxation and entertainment. The modern kitchen is a chef's delight, boasting a stainless steel 900mm gas cooktop and oven, dishwasher, a substantial 3-meter stone breakfast bar, stone countertops, and ample storage space. Additionally, there's a charming nook ideal for a reading corner and a convenient powder room. Upstairs, discover a second nook area and accommodations offering three generous bedrooms. Two bedrooms come with built-in robes, while the master suite features a walk-in robe and a private luxurious ensuite. A well-appointed, sleek central bathroom with a full-sized bathtub serves the additional bedrooms, along with a separate WC. Further highlights include premium hybrid oak floorboards, quality carpeting upstairs, sleek black finishes throughout, split system heating/cooling in each bedroom and on the ground level, a separate laundry, an outdoor water tank, and a spacious garage with an automatic tilt panel door. Situated amidst a plethora of lifestyle offerings, including Selwyn Park, Albion Tennis Club, Kororoit Creek Trail, Albion Train Station, the bustling Perth Avenue shopping precinct, and esteemed educational institutions like St Theresa's Catholic Primary School and Albion Primary School, this home is within a convenient 12km radius of the CBD. Experience the perfect blend of style, functionality, and luxury in this beautifully designed house. Your dream abode awaits-seize the opportunity to make it your own! DOUGLAS KAY 280 HAMPSHIRE ROAD, SUNSHINE VIC 3020