

68 Liege Avenue, Noble Park, Vic 3174

CENTURY 21

House For Sale

Thursday, 11 July 2024

68 Liege Avenue, Noble Park, Vic 3174

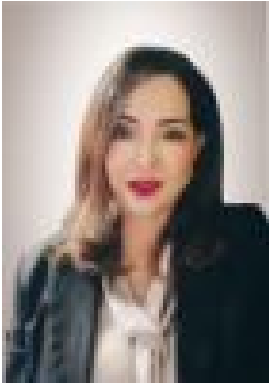
Bedrooms: 4

Bathrooms: 3

Parkings: 3

Area: 585 m2

Type: House



Theresa Huynh
0395477222

\$1,000,000 to \$1,100,000

Bespoke family home of approximately 35 squares with four good sized bedrooms upstairs, master with WIR and ensuite three bedrooms with BIR and a family bathroom. All bedrooms feature split-system AC units for individual year-round comfort. The ground floor offers plenty of room to entertain, one side of the entry foyer is a formal lounge and adjacent formal dining room. A hostess kitchen offers plenty of storage and bench space including a breakfast bar separating it from family room. Access to the rear yard is either via a glass sliding door in the family room or through the laundry. On the other side of the foyer is a large office/fifth bedroom and a third bathroom just down the hall. At the end of the hall is a substantial rumpus room with built in bar and open fireplace for that extra seasonal atmosphere. You can also enter the double garage from here, longer than most garages it includes a sizable workshop/storeroom that includes an access door to the secure rear yard. Overall, an impressive family home conveniently located a short walk to public transport, Yarraman railway station, schools with easy access to shopping centres and East Link. Features. Upstairs: 4 bedrooms with BIR, split-system AC units, Master includes ensuite Ground Floor: Office/5Th bedroom, third bathroom, separate laundry Spacious kitchen and family room, Formal Lounge, Formal dining room Huge Rumpus room with built-in-bar, and open fireplace. Extra long double garage with additional workshop/storage room Window shutters, new side gates Walking distance to public transport and schools Currently leased till April 2025 at \$3200pcm