

68 Paloma Street, Bentleigh East, Vic 3165



House For Sale

Wednesday, 3 July 2024

68 Paloma Street, Bentleigh East, Vic 3165

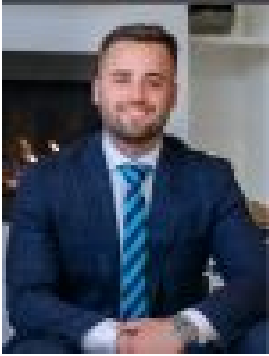
Bedrooms: 3

Bathrooms: 1

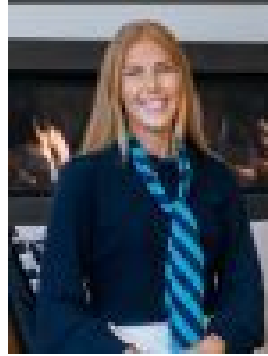
Parkings: 1

Area: 557 m2

Type: House



James Grosso
0458037060



Olivia Maywald
0488170006

Contact Agent

With an ideal blend of instant comfort and immense potential, this property is a clever investor's dream. Filled with classic weatherboard charm on a sizeable 557sqm (approx.) allotment with single garage and sprawling gardens, this could be the perfect place to call home or a premier development opportunity (STCA).The single-level interior evokes a warm and familiar feeling from its traditional layout. The lounge with floor to ceiling windows and classic gas heater adjoins the versatile meals area and family room. The contemporary kitchen is adorned with a stainless steel oven and gas range for those who love to cook. Access to the large paved patio ensures indoor-outdoor living is offered with ease.In addition, there are 3 generous bedrooms provided as well as a stylish white bathroom with soaking tub and separate WC in the laundry.Whether you choose to reside here or redevelop the block, this compelling property also ensures you are in prime position. Zoning for sought-after Coatesville Primary School and South Oakleigh Secondary College is advantageous for families. Proximity to Mackie Road Reserve, Huntingdale Golf Club, The Links Shopping Centre, Oakleigh Central, Oakleigh train station, bus transport, freeway access, and Chadstone shopping precinct makes this the perfect place to call home.