

7 Cottesmore Street, Plumpton, VIC, 3335



House For Sale

Monday, 28 October 2024

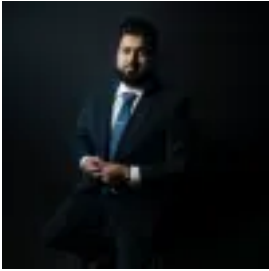
7 Cottesmore Street, Plumpton, VIC, 3335

Bedrooms: 4

Bathrooms: 3

Parkings: 2

Type: House



Mohit Batra
0391909991

Luxurious Living with Two Master Suites and Modern Features!!!

Unique & Co. Real Estate Group is delighted to present this stunning family home at 7 Cottesmore Street, situated in the highly coveted Aldo Estate in Fraser Rise. Just minutes from Melton Highway, this beautiful property is only a 7-minute drive from Watergardens train station, with an express train taking you to Melbourne's CBD in just 32 minutes. With its ideal layout, this home is perfect for first-time buyers, investors, or those looking to downsize.

This newly constructed home boasts two master bedrooms, each with its own ensuite and walk-in robe, while the additional two spacious bedrooms are serviced by a central bathroom and toilet-perfect for a growing family. The modern kitchen features a stone benchtop, gas cooktop, oven, dishwasher, and a generous walk-in pantry for all your storage needs.

Designed with modern living in mind, this property offers a thoughtful floor plan that combines comfort and style. Natural light fills the open-plan living area, creating a warm and inviting space. The kitchen comes equipped with sleek stainless-steel appliances, ample workspace, and a walk-in pantry. A separate formal lounge and double garage add to the convenience and luxury.

Experience the best of Fraser Rise living in this beautifully planned community, just 25 minutes from Melbourne's city center. It's a vibrant neighborhood where you can achieve your dreams and raise a family, surrounded by green spaces, shopping centers, schools, and all the essentials of life. There's plenty of room to grow, explore, and enjoy daily inspiration in this wonderful setting.

Aldo Estate is an ideal location for families, with a variety of public and private schools nearby, including Sydenham - Hillside Primary School and Springside West Secondary College, providing excellent options for your children's education.

Special Features:

- 2700mm Ceiling Height
- Two Master Bedrooms with Ensuite and Walk-in Robes
- Two Additional Bedrooms with Built-in Robes and Ample Shelving
- Dedicated Study/Office Space
- Expansive Main Living Area with Separate Dining Space
- Formal Lounge Room
- 900mm Kitchen Appliances
- Dishwasher Included
- Zoned Refrigerated Heating and Cooling
- LED Downlights Throughout
- Premium Timber Laminate Flooring
- Floor-to-Ceiling Premium Tiling in Wet Areas
- High-Quality Fixtures and Finishes
- Remote-Controlled Double Garage
- Exposed Aggregate Driveway
- Concrete Surrounding the Home
- Fully Landscaped, Low-Maintenance Front and Backyard
- Fully Fenced
- Security Alarm
- And Much More!

Don't miss out on this incredible opportunity to own your dream home! Contact Mohit at 0483 000 009 or Mohinder at 0413 114 454 to arrange a viewing-this one won't stay on the market for long.

Please see the below link for an up-to-date copy of the Due Diligence Check List:
<http://www.consumer.vic.gov.au/duediligencechecklist>

DISCLAIMER: All stated dimensions are approximate only. Particulars given are for general information only and do not constitute any representation on the part of the vendor or agent. *Images for illustrative purposes only*