

7 Emperor Court, Berkeley, NSW, 2506

STONE

House For Sale

Thursday, 1 August 2024

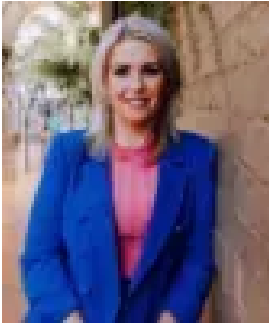
7 Emperor Court, Berkeley, NSW, 2506

Bedrooms: 4

Bathrooms: 3

Parkings: 1

Type: House



Sarah Ward
0400439602

Perfectly positioned sanctuary with water views

With its warm yet stylish feel, great outdoor entertaining areas and stunning lake views, this beautiful residence isn't just a home – it's a lifestyle. Set amid lush greenery at the top of a cul-de-sac, and boasting a terrific downstairs living space complete with its own bathroom and kitchenette, it's an outstanding family offering approx. 15 minutes south of Wollongong CBD.

- Retreat-style brick veneer property providing four bedrooms plus a study
- Engineered floors and beamed cathedral ceilings, ducted A/C
- Idyllic decks and grounds, fruit trees including olive, macadamia and mulberry
- Main kitchen with induction cooktop and skylight; master bedroom with ensuite
- Private second lounge, bed and media room – ideal for in-laws or a teenager
- Electric HWS connected to solar, 13m under-house storage, water tank, carport
- Approx. 900m to Berkeley Public School and 1km to Illawarra Sports High
- Foreshore parks and walks, shops and Port Kembla Beach in close proximity

The below rates are provided as a guide:

Council rates \$544.09pq approx.

Water rates \$172.79pq approx.