

7 Muli Place, Suffolk Park, NSW 2481

House For Sale

Monday, 8 July 2024

7 Muli Place, Suffolk Park, NSW 2481

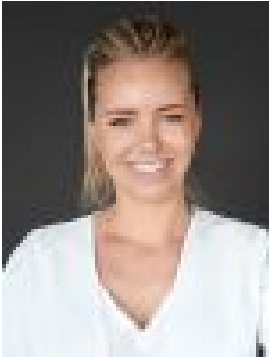
Bedrooms: 6

Bathrooms: 4

Parkings: 2

Area: 790 m2

Type: House



Tara Torkkola
0266858466



Jasmin McClymont
0266858466

Guide \$3.5M

Discover the epitome of modern living, where every detail has been meticulously designed and built by prestige Byron Bay Building Co. Elevated positioning in a tranquil cul-de-sac, this beautiful residence is a harmonious blend of elegance and functionality, offering you a lifestyle beyond compare complete with two new homes and a pool. Step into the heart of luxury with this exceptional recently built residence that boasts a grand 4-bedroom, 3-bathroom main residence and an approved second dwelling featuring 2 bedrooms and 1 bathroom, this property offers both multi-generational living possibilities and the chance for additional income streams with the benefit of 10kw of solar. Upstairs the main residence captivates you with a spacious open floorplan with a large kitchen, dining and living area. The seamless flow extends to the expansive entertaining deck which is the perfect place to host gatherings with family and friends. Upstairs also hosts the main suite, which is a sanctuary of indulgence. This haven is a parent's dream, complete with a generously sized walk-in wardrobe and a private ensuite, ensuring your personal space is one of tranquility and comfort. The lower level of the main dwelling is dedicated to privacy and surplus living areas, housing three well-appointed bedrooms, each with its own built-in robe. One of these bedrooms has a private ensuite which is perfect for a guest suite. There is also an additional living room and double garage. Outdoors is a verdant oasis secured for your utmost privacy. Here, a heated 6x3 metre plunge pool awaits, a year-round haven for relaxation and recreation, whether under the summer sun or the starlit winter sky. In addition to the main residence is a secondary dwelling with 2 spacious bedrooms each with built in robes and a large open plan kitchen, living and dining with stacker doors effortlessly connecting the indoors with the outdoors, opening out onto the expansive deck that overlooks the lush, fully enclosed yard. This home is just a short drive/ride into the heart of Byron Bay's vibrant town center, where you can indulge in its eclectic offerings. The beach is a short stroll giving you the perfect balance of coastal living with Suffolk Park Village and Shops down the road too. Don't miss your chance to own this modern masterpiece that promises a life of tranquility and comfort. Call Tara today to arrange an inspection. Council Rates: \$2,319.20 pa