

7 Oakwood Terrace, Palm Beach, Qld 4221

House For Sale

Sunday, 23 June 2024

7 Oakwood Terrace, Palm Beach, Qld 4221

Bedrooms: 5

Bathrooms: 3

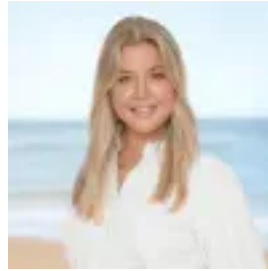
Parkings: 2

Area: 627 m2

Type: House



Paula Dunford
0402324971



Mackenzie Wood
0450898700

Auction

Auction Location: On-Site Architecturally designed by Jardine Design Space, "Halcyon" – The Courtyard Home, wraps around a central open-air atrium, capturing ocean glimpses and elevated views across Palm Beach. Spanning 391m² across two levels with multiple Velux skylights, extensive louvred glazing and large-scale slider doors you are left bathed in sunshine and cool breezes, bringing warmth to the contemporary interiors. The Natural Verona stone-clad feature wall in the lounge accentuates the soaring cathedral ceiling and a cosy electric fireplace. Cooking is sublime in the gourmet kitchen, equipped with Bosch appliances and complemented by a striking Indian Jet granite island bench. Whilst entertaining, you will find guests gathering here or in the adjacent dining area for meals, with both spaces connecting seamlessly with the central courtyard. A second alfresco area also awaits, with this decadent entertaining area boasting an outdoor kitchen, featuring an "Artusi" BBQ, wine fridge all with privacy and protection from the elements with easy access to the magnesium pool. A second living area and two of the five bedrooms beckon atop the solid blackbutt timber staircase. The spacious master suite is a blissfully sunlit sanctuary, tempting you with a cosy window seat, a luxe ensuite with freestanding bath and walk-in robe. Downstairs includes a potential 2nd master suite (with walk-in robe and ensuite), complemented by a modern main bathroom with custom concrete double vanity and dual rain shower. Property Features:- Showstopping courtyard with concrete floating bench seating with feature LED under-lighting - 627m² block, elevated with an outlook across Palm Beach, capturing ocean glimpses and gentle breezes- Architecturally designed by Jardine Design Space, spanning 391m² across two levels- Striking interiors illuminated in sunshine cast from multiple Velux skylights, extensive louvred glazing and large-scale stacking slider doors- Gourmet kitchen with Indian Jet granite island bench, complemented by custom concrete benches, Bosch 900mm induction cooktop and electric oven, integrated dishwasher and integrated fridge - Walk through butler's pantry with dishwasher drawer and wine fridge - Dining area adjoins kitchen, both connecting seamlessly with the central courtyard with feature grass tree- Sunken living room with built in lounge rests beneath a soaring 4.1m cathedral ceiling, enhanced by a Natural Verona stone-clad feature wall with electric fireplace - Bright and breezy upper-level living area with stunning sunrises and sunset opportunities- Palatial, sunlit master suite beneath a raked ceiling, boasts a cosy window seat plus a luxe, light-filled ensuite with custom concrete double vanity, freestanding bath and walk-in robe - Four additional bedrooms, including a ground floor guest/2nd master suite with walk-in robe and ensuite- Main bathroom with custom concrete double vanity, dual rain shower and bath- Laundry with black tapware and adjacent powder room - Solid Blackbutt staircase, with an operable 3m x 1m skylight above- Covered alfresco entertaining area with a built-in outdoor kitchen and wine fridge - Magnesium pool with natural travertine surrounds- Central courtyard with feature grass tree and bespoke wrap around concrete bench with LED lighting - Outdoor shower - Double garage with epoxy floor plus off-street parking for an additional car- Outdoors boasts natural travertine tiling and automated lighting- Verona Natural stone front entry feature wall and a rear elevated planter box - Louvre windows throughout inviting cool cross breezes- Wool carpet to bedrooms and upstairs living area - Brushed nickel tapware throughout - Multiple linen cupboards and storage options- Home automated CCTV and Electric Vehicle Charging provisioning Location:Tucked away in a tightly held street, take advantage of being within walking distance to the sand and surf of Palm Beach, and its thriving foodie scene. Mallawa Sports Complex and Palm Beach State Primary School are also accessible on foot, with the popular Palm Beach-Currumbin State High approx. 3 minutes by car. Additionally, embrace the close proximity to tranquil Tallebudgera Creek or swap still waters for world-class waves at nearby Currumbin Alley and Burleigh. Factor in the centrality to the M1 and Gold Coast Airport and it's easy to see why this location is hard to beat. Approx. 1 min drive/10 min walk to Mallawa Sports Complex Approx. 2 min drive/15 min walk to Palm Beach coastline, cafes, restaurants and boutiques Approx. 2 min drive/15 min walk to Palm Beach State Primary School Approx. 3 min drive to Tallebudgera Creek Approx. 3 min drive to Palm Beach-Currumbin State High Approx. 5 min drive to Currumbin Alley Approx. 7 min drive to Burleigh beaches, cafes, restaurants and boutiques Approx. 10 min drive to Gold Coast Airport Disclaimer: Whilst every effort has been made to ensure the accuracy of these particulars, no warranty is given by the vendor or the agent as to their accuracy. Interested parties should not rely on these particulars as representations of fact but must instead satisfy themselves by inspection or otherwise. Price Disclaimer: This property is being sold by Auction or without a price and therefore a price guide cannot be provided. The website may have filtered the property into a price bracket for website functionality purposes only.