

7 Sapphire Drive, Alfredton, Vic 3350



House For Sale

Wednesday, 3 July 2024

7 Sapphire Drive, Alfredton, Vic 3350

Bedrooms: 4

Bathrooms: 2

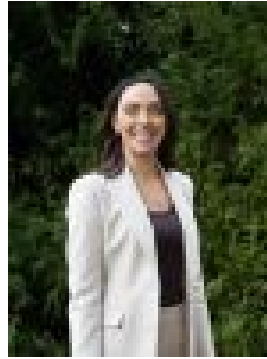
Parkings: 2

Area: 376 m2

Type: House



Daniel Nestor
0437840593



Celeste Giles
0439381756

\$975,000 - \$1,050,000

Located at the pinnacle end of the esteemed Insignia estate, with a view to holes 6 and 7 of the award-winning Ballarat Golf Course. This executive two storey home is positioned in a quiet court amongst homes of similar class and quality, boasts an outstanding street presence and ultimate practicality. • A striking two storey design with amazing street appeal, this is a home for the family of entertainers. • A wonderful floorplan offering a huge master suite down stairs off the entry hall. Access the stylish ensuite through the walk through robe space. • The open plan kitchen/meals/living space is impressive and light filled. A gorgeous butt glazed window offers a superb view from the dining area. • The kitchen is dressed in outstanding quality with stone countertops, two tone timber and gloss white cabinetry and a large walk in pantry. • Access out to the decked alfresco entertaining area via sliding doors. This area has been extended to incorporate a sheltered BBQ space. • Upstairs to a further 4 bedrooms or 3 plus a study. All are generous in size and offer built in robes. The rear guest bedroom features a walk in robe. • A large central living space surrounds these bedrooms, and all are serviced by the family upstairs bathroom with a feature bath. • Further features of note include the walk in linen, drying cupboard, downstairs powder room, incredible established landscaping and screening trees and nearby course access. • Walk to the clubhouse, Alfredton convenience shopping, Lake Wendouree, Victoria Park, Ballarat High School and The Park Hotel. • A stunning contemporary home. Make it yours