

7 Woodvale Place, Castle Hill, NSW 2154

House For Sale

Wednesday, 19 June 2024

7 Woodvale Place, Castle Hill, NSW 2154

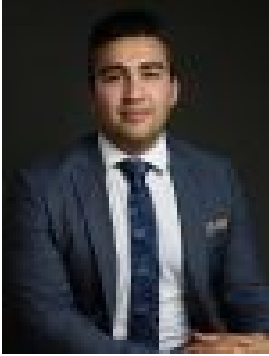
Bedrooms: 5

Bathrooms: 3

Parkings: 2

Area: 900 m2

Type: House



Iman Makari
0297628888



Mitchell Hubbard
0297628888

Auction

Introducing 7 Woodvale Place, nestled in the serene cul-de-sac of Castle Hill's esteemed First Farm Drive estate. Step into this inviting home, where manicured gardens greet you, setting the stage for refined family living. The ground floor seamlessly flows around the central kitchen, creating a home that effortlessly connects, fostering a sense of unity within. With stainless steel (gas) appliances and spacious Caesarstone benchtops, this kitchen is a hub for family gatherings. The kitchen looks towards the sparkling in-ground pool area and expansive, private, backyard. This functional layout ensures effortless hosting and memorable moments as family and friends gather. The rear facing family room and formal dining areas also overlook the backyard. These large living spaces boast expansive windows, filling the rooms with light. Upstairs, five bedrooms await, all adorned with timber flooring. The master suite features a mirrored walk-in robe and a private ensuite. Outside, the level backyard offers a low-maintenance lifestyle with a spacious paved area adjoining the in-ground pool. Perfect for relaxation and entertainment, this private oasis is a haven for both friends and family to enjoy. This location is surrounded by nearby amenities such as Castle Towers, First Farm Reserve, Heritage Park, James Greenwood Reserve, bus stops, and the Metro Station. Offering ultimate convenience in a prestigious location.

Property Features:

- In-ground Salt Water Pool + Water Feature
- Low maintenance grounds
- Ducted A/C
- Large Central Kitchen
- Level Ground Floor (no steps)
- Large Entrance Foyer
- Large, Light Filled Family Room
- Extra Storage Room (behind garage)

Location Features:

- Castle Towers Shopping Centre - 1.2km
- Castle Towers, Metro Station - 1.2km
- Bus Stop (First Farm Drive) - 190m
- First Farm Reserve - 210m
- Heritage Park Reserve - 1.1km
- James Greenwood Reserve - 270m
- Fred Caterson Reserve - 3.5km
- Castle Hill RSL - 2.4km
- Knightsbridge Shops - 3.1km

School Catchments:

- Castle Hill Public School - 1.7km
- Castle Hill High School - 2.7km