

772 The Horsley Drive, Smithfield, NSW 2164



House For Sale

Tuesday, 25 June 2024

772 The Horsley Drive, Smithfield, NSW 2164

Bedrooms: 2

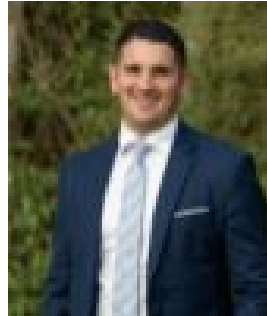
Bathrooms: 1

Parkings: 1

Type: House



Marcus Biassetto
0296097099



Matteo Pecora
0296097099

Auction

Welcome to this charming 2-bedroom, 1 bathroom home located at 772 The Horsley Drive in Smithfield. Situated on a corner block land with side access for undercover parking. This lovely home offers a comfortable living space with a cozy living room, dining room, and a well-maintained front yard and private backyard space perfect for outdoor entertaining. The interior boasts hardwood floors, a modern kitchen, and plenty of natural light throughout. Conveniently close to public transport, local schools, and main shopping centres, this property is perfect for first-time buyers, downsizers, or investors looking for a great opportunity. Don't miss your chance to own this beautiful home - come see it for yourself! Don't hesitate to reach out for more information or to schedule a viewing. This property won't last long! Featuring:

- 2 spacious bedrooms with 1 built-in wardrobe
- 1 carport with electric fence side access
- Large front yard space
- Refurbished cladding exterior
- Updated bathroom
- Split system air conditioning
- 6 minute drive to Stocklands Shopping Centre
- 10 minute drive to M4 Motorway
- Walking distance to Smithfield Public School & St Gertrude's Catholic Primary School