

8 North Court, Surrey Hills, Vic 3127



House For Sale

Thursday, 26 September 2024

8 North Court, Surrey Hills, Vic 3127

Bedrooms: 4

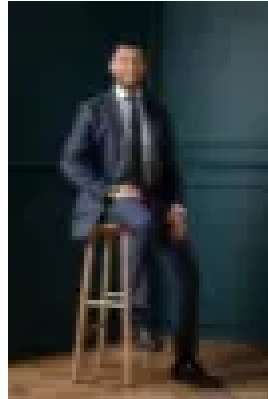
Bathrooms: 2

Parkings: 2

Type: House



Tom Rogan
0400595527



Davide Lettieri

\$2,300,000 - \$2,500,000

Perfectly located in a quiet family-friendly cul-de-sac which is home to a fortunate few, this classic clinker brick family home has been superbly renovated and extended to deliver exceptional zoned family accommodation in keeping with its privileged location. Set in immaculately maintained lush garden surrounds, bordered by box hedging and ornamental trees, this home leaves a captivating impression. The split-level interior features original Art Deco qualities including decorative ceilings, leadlight and etched glass beautifully complemented by spacious, modern luxury. Victorian Ash flooring flows through the hallway leading to three downstairs bedrooms with built-in robes, a sparkling family bathroom, powder room and laundry; plus a sitting room with fireplace, and library/reading room revealing a spectacular light-filled rear extension with tall windows extending over its two levels. A sumptuous master suite is located on the upper level with a generous WIR, luxurious ensuite that takes advantage of stunning city views. The lower level has an expansive family living and dining area together with a state-of-the-art entertainer's kitchen equipped with CaesarStone bench tops, prestige Miele appliances and a butler's pantry. Flowing to sunny terrace overlooking, paved alfresco dining and barbeque area in a leafy rear garden – perfect for indoor/outdoor relaxation and entertaining family and friends. Other features include ducted heating, R/C air conditioners, opulent fixtures and fittings and a remote garage with rear access and tandem off-street parking. North Court is conveniently located close to local shops and cafes including Surrey Hills Village, Through Road, Middle Camberwell and the Junction. Also an excellent array of schools and kindergartens and Deakin University, Riversdale Road trams and other parklands including South Surrey Park - all providing exceptional recreation and sporting facilities to underpin its family lifestyle credentials. Land Size: 653sqm approx.