

# 8 Sullivan Link, Doreen, Vic 3754

CHWYLA

## House For Sale

Monday, 8 July 2024

8 Sullivan Link, Doreen, Vic 3754

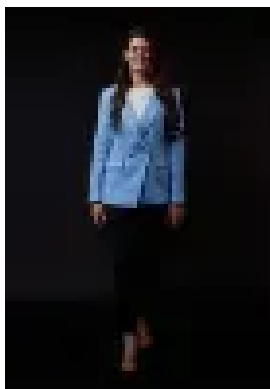
Bedrooms: 4

Bathrooms: 2

Parkings: 2

Area: 607 m2

Type: House



Stacy Richards

0386009995

**\$980,000 - \$1,050,000**

Expressions of Interest closing Tuesday 30th July at 5:30pm. Make more of : 607m<sup>2</sup> ☑ Corner block ☑ Laurimar ☑ Facing parkland ☑ Four bedroom family home ☑ Two bathrooms with stone benchtops ☑ Two living areas ☑ Study with built-in cabinetry ☑ Oversized double garage with built-in cabinetry ☑ Security doors ☑ Plantation shutters ☑ Double blinds ☑ Tiled flooring ☑ New carpet ☑ High ceilings ☑ Three skylights ☑ Feature lighting ☑ Downlights throughout ☑ 40mm stone kitchen benchtops ☑ 900mm Smeg appliances ☑ Dishwasher ☑ Custom cabinetry with LED strip lighting ☑ Hidden walk-in pantry ☑ Plumbed fridge space ☑ Huge laundry with built-in cabinetry ☑ Double door linen cupboard ☑ Master with fitted out walk-in robe ☑ Remaining bedrooms with double door robes ☑ Ducted vac ☑ Ducted heating ☑ Refrigerated cooling ☑ Ceiling fan ☑ Double timber sliding doors ☑ Fully enclosable alfresco with ceiling fan, ducted heating and refridge cooling ☑ Outdoor kitchen with built-in Beef Eater barbie, bar fridge, industrial rangehood, stone benchtops, significant cabinetry ☑ Extended decking ☑ Covered firepit area with built-in seating ☑ Festoon lighting ☑ Garden shed ☑ Low maintenance landscaping with synthetic lawn ☑ One veggie box ☑ Potential for side access via Orient Drive ☑ Quiet street ☑ Opposite walking track to Yan Yean Reservoir ☑ 550m to Chadwick park and playground ☑ 1.3km to Laurimar shops ☑ The initial appeal – A quiet and private location on a sleepy street in Laurimar, facing directly onto parkland [you'll have the walking track through to Yan Yean Reservoir at your front door]. Got a van? There's the potential for side access via Orient Drive if you'd like to drop in a gate. The main attraction – Taking your outdoor entertaining to the next level, right here. This is a fully enclosable space with an outdoor kitchen: built-in barbie, bar fridge, stone benchtops, heaps of cabinetry, ducted heating and refridge cooling. Yep, you read that right. Refrigerated cooling in your alfresco. Your journey here starts this Saturday.☑