

82 Kullaroo Road, Summerland Point, NSW, 2259

Property
Alchemy

House For Sale

Thursday, 1 August 2024

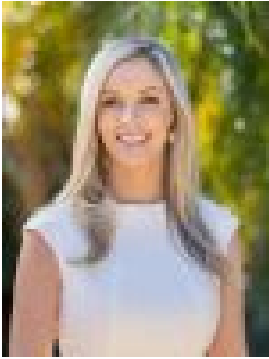
82 Kullaroo Road, Summerland Point, NSW, 2259

Bedrooms: 4

Bathrooms: 2

Parkings: 1

Type: House



Belinda Urquhart
0300896050

Move in, Renovate, or Knock Down and Build, Moments From the Lake

Positioned on a 506m² corner block, this 1970's home is in need of some tender loving care and offers enormous potential in a prime lakeside location close to shops, parks, transport, and directly across the street from waterfront access.

Charming and light-filled, the family home has plenty of space for the whole family with two living areas, four bedrooms and two bathrooms. The generously sized kitchen enjoys an outlook to the backyard with a cathedral ceiling and an open plan design. Upstairs, the second living area has beautiful timber flooring and flows onto the front verandah with tranquil leafy views.

There is so much potential and multiple options here. You could move in, renovate, rent out, land bank for the future, or bulldoze and build your dream home in a superb lakeside location (STCA). With land so scarce in the area, this could be the hottest opportunity you will come across this year.

Positioned in a picturesque area of the Central Coast, you have the lake to the west and the ocean to the east. You can take the boat out in the morning and go fishing then head down to the ocean for a surf in the afternoon. Offering an enviable lifestyle in a dream location, this property will not last long!

- 4 bedrooms, 2 bathrooms, single garage
- 506m² corner block positioned 1 street back from the water
- 2 living areas
- Huge kitchen with cathedral ceiling
- Open plan living flowing onto the garden
- Balcony off the upstairs living area
- Timber flooring upstairs
- Garden shed
- Expansive backyard
- Short walk from Lake Macquarie and Sandy Beach
- 60 metres from the waterfront
- 450 metres from Sandy Beach Reserve
- 600 metres from the bus stop
- 1.1km from local shops and cafes
- 2.9km from Gwandalan Public School
- Around 1 hour's drive from Newcastle
- Around an hour and a half's drive from Sydney