

# 9 Ben Drive, Pakenham, Vic 3810



## House For Sale

Monday, 8 July 2024

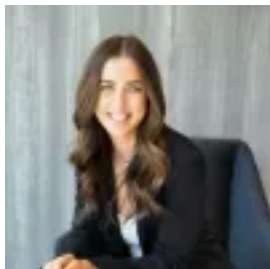
9 Ben Drive, Pakenham, Vic 3810

**Bedrooms: 3**

**Bathrooms: 2**

**Area: 533 m2**

**Type: House**



Lily Young

0359414444

**\$565,000 - \$595,000**

Occupying a generous 533sqm block with dual side gate access, the perfect first home, downsizer or investment awaits. The practical floorplan showcases open plan living, dining and kitchen with plenty of natural light as well as ducted heating and split system cooling for optimal comfort. The spacious kitchen offers plenty of storage, wall mounted oven, gas cooktop and breakfast bar. Accommodation comprises of three bedrooms including a spacious master bedroom with a walk in wardrobe and ensuite. The remaining two bedrooms have built in wardrobes and are serviced by the central family bathroom. Outside, a large patio with neat garden beds, garden shed and spacious backyard with dual car access. Ideally positioned within walking distance to Cardinia Lakes Parkland, shopping complex, childcare facilities, schools, and public transportation, this location is one you will not want to miss.