

9 Bondi Rd, The Entrance North, NSW, 2261



House For Sale

Tuesday, 24 September 2024

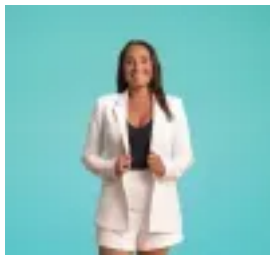
9 Bondi Rd, The Entrance North, NSW, 2261

Bedrooms: 4

Bathrooms: 3

Parkings: 4

Type: House



Chantel Laing

0243856423

Coastal Family Home with Versatile Living and Scenic View

Nestled just 100 metres from Tuggerah Lakes with a lovely scenic water view, where you can cast a line or 550-metre stroll to the beautiful beach, this expansive two-story home combines space, style, and a laid-back coastal lifestyle. Impeccably presented, the home boasts sundrenched interiors, a stunning modern stone bench kitchen, and versatile living spaces perfect for large or growing families.

With the flexibility of up to four bedrooms or three bedrooms with two generous living areas, this home easily adapts to your family's needs. The open-plan layout blends seamlessly with multiple outdoor entertaining options, including a sun-drenched deck and fully enclosed verandah, making it perfect for hosting family gatherings or relaxing with coastal breezes.

Additional features include drive-through access to a rear triple garage, complete with its own bathroom, offering excellent storage or potential for extra living quarters. The large, grassy backyard provides ample room for kids and pets to play safely.

Air conditioning and ceiling fans throughout ensure comfort year-round, while the premium seaside address places you just footsteps away from pristine beaches, the foreshore, and vibrant local amenities.

Home comforts: European appliances, induction cooktop, timber flooring, plantation shutters, split system air-conditioning, fans. Modern bathroom with large corner bath for the growing family with separate toilet. Bamboo flooring throughout.

This is an exceptional opportunity for those seeking a spacious family retreat with plenty of room to grow and the ultimate beachside lifestyle.

Rates: \$2,013.15pa

Rental estimate: \$830pw

For further information, please contact listing agent Chantel Laing on 0410 433 213.