

93 Observatory Drive, Reedy Creek, Qld 4227



House For Sale

Tuesday, 2 July 2024

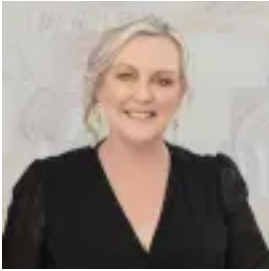
93 Observatory Drive, Reedy Creek, Qld 4227

Bedrooms: 3

Bathrooms: 2

Parkings: 2

Type: House



Leanne Jenke

0755932088

Expressions of Interest

Leanne Jenke Team is proud to present this exceptional level family home offering the perfect blend of modern living and convenient amenities. Nestled in the tranquil leafy suburb of Reedy Creek. Boasting 3 bedrooms plus a study, 2 bathrooms, and multiple open plan living areas, this property is designed to accommodate the needs of a young family or a couple who are downsizing. Making your way inside the home, you will appreciate the design which provides open plan kitchen, dining and lounge, plus additional media room. The kitchen is spacious and centrally located to separate dining and family living. Featuring quality bench tops, appliances, top of the range 900 gas stove and oven plus walk in pantry. Well positioned on a generous low maintenance 610 m² is this great single level home, fenced and gated, ideal for children and pets. This rear yard could easily accommodate play equipment. Covered outdoor entertaining is privately located and overlooks the garden. This property is also a few minutes to Hinterland Regional Park, Robina Town Centre, Robina Hospital and Medical Hub, Robina Train Station and public transport. A mere 20 minutes drive to vibrant Burleigh Beach. The M1 entrance connecting you to Coolangatta Airport (approx. 25 mins), This is an exceptional opportunity to immerse yourself into the family-friendly low maintenance lifestyle of Reedy Creek. Key Features:

- Multiple open plan living areas
- Stunning modern kitchen with wide bench and preparation space with huge pantry and pendant lighting
- As New 900 Gas stove top and oven. A chefs delight.
- Experience seamless flow between the kitchen, dining, and living areas, creating the perfect space for family gatherings and entertaining.
- The huge over sized Master Suite is a perfect tranquil space to retreat to with warm neutral tones plus a with walk in Robe and ensuite
- 3 generously sized bedrooms with built in robes.
- A separate study, offers a dedicated workspace for remote work or personal projects.
- Enjoy the luxury of two beautifully appointed bathrooms, perfect for busy mornings or unwinding after a long day.
- Tiled throughout in modern neutral tones
- Low Maintenance gardens ideal for those with busy lifestyles
- Undercover patio at the rear over looking the gardens
- Room to add your dream pool.
- Large Solid Timber Pivot front entry door
- Double lock up garage with internal access plus rear yard access.