

B403/10 Baptist Street, Redfern, NSW 2016



House For Rent

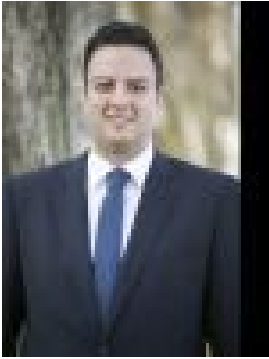
Wednesday, 3 July 2024

B403/10 Baptist Street, Redfern, NSW 2016

Bedrooms: 1

Bathrooms: 1

Type: House



Costa Kaparos
0416210089



Steve Psomadellis
0477731840

\$845 P/W - 1 Bed + Study

This brand-new one bedroom apartment is located on the upper floor at the new Surry Hills Village (www.surryhillsvillage.com.au/) a \$400+ million mixed-use precinct designed by an award-winning architects and developed & built by TOGA. The masterplan features 7,000sqm of retail space, including a Coles and Harris Farm; a 102 room luxury boutique hotel; and a large public park for residents. The open plan interiors are bright and spacious whilst the undercover balcony is perfect for entertaining or relaxing alike with dual access from the bedroom and living space. The gourmet gas kitchen boasts an island bench top, integrated fridge & dishwasher and abundant storage whilst the masterful bathroom includes a large internal laundry with Fisher & Paykel washing machine & dryer. A superb chic location for comfort and convenience, enjoy the best of inner city living on the border of Surry Hills & Redfern. With world class eateries, supermarket & amenities and ample transport at your doorstep - contact us today for an inspection.

Brand new unit in Surry Hills Village by Toga - Designed by award-winning architects SJB Architects - Spacious study with storage - 4th floor, Lift Access, Security Building with intercom access - Large undercover balcony & spacious floorplan - Open plan interiors w/ large windows & natural light - Ducted A/C - Siemens appointed gas kitchen w/ stone island benchtop - Stylish modern bathroom w/ large internal laundry - Includes integrated fridge, dishwasher, washing machine & dryer - Allocated secure storage space in basement - High quality & abundant joinery / wardrobes throughout - Idyllic locale only moments to cafes, bars, restaurants & transport - Well connected by ample transport - Pets considered upon application