

Lot 128 Riverlily Circuit, Bohle Plains, Qld 4817

House For Sale

Monday, 1 July 2024



Lot 128 Riverlily Circuit, Bohle Plains, Qld 4817

Bedrooms: 4

Bathrooms: 2

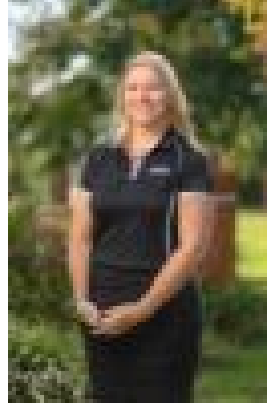
Parkings: 2

Area: 569 m2

Type: House



Ian Maloney
1300455557



Sarah Wheatley
1300455557

\$584,000

This optimized 4 bedroom design created specifically for the blocks on which they sit. Large master bedroom with large ensuite and walk-in- wardrobe. Open plan living design with front patio situated to make the most of easterly breezes. Packed with features including internal laundry, study nook, and storage. Offering the highest level of standard inclusions in the local market, Ellis Developments prides itself on an unwavering commitment to customer service while also delivering the most up-to-date finishings on a truly masterful design. Our standard luxury inclusions are: * 2700 high ceilings* Stone benchtops to kitchen with 40mm finish to island bench* Stone benchtops to all bathroom vanities and laundry* Feature 3 step cornice in living/dining area* Custom Cabinets with soft close doors and drawers* Undermount rangehood with electric cooktop and feature airfry oven* Fully airconditioned with split systems (all bedrooms and living, not just the master bedroom!)* LED downlights throughout* Security screens to all windows and sliding glass doors* Premium Tapware and tiles up to 600mm x 600mm included* Letterbox, 60m2 of exposed aggregate driveway and clothesline.* Turf, irrigation and fencing included to entire block Visit our Savannah 'B' display home at 15 Firewheel Parade, Sanctum - open 9am until 5pm Fridays through to Tuesdays. Images are for illustrative purposes only.