

Lot 129 Riverlily Circuit, Bohle Plains, Qld 4817

House For Sale

Tuesday, 2 July 2024



Lot 129 Riverlily Circuit, Bohle Plains, Qld 4817

Bedrooms: 4

Bathrooms: 2

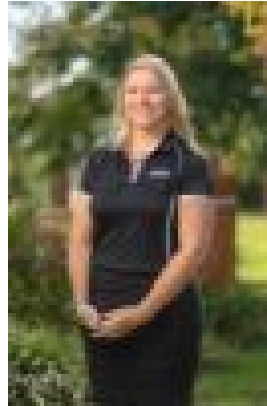
Parkings: 2

Area: 401 m2

Type: House



Ian Maloney
1300455557



Sarah Wheatley
1300455557

\$566,750

The perfect blend of form and function with our 182m² Milverton home. This home features 4 great sized bedrooms, 2 bathrooms and a double garage. The master bedroom is located at the front of the home complete with a walk in Robe and Ensuite while the other 3 generous sized bedrooms are in their own wing of the home complete with bathroom and a separate toilet. Potential to make Bed 4 into a multi-purpose/media room. Offering the highest level of standard inclusions in the local market, Ellis Developments prides itself on an unwavering commitment to customer service while also delivering the most up-to-date finishings on a truly masterful design. Our standard luxury inclusions are: * 2700 high ceilings* Stone benchtops to kitchen with 40mm finish to island bench* Stone benchtops to all bathroom vanities and laundry* Feature 3 step cornice in living/dining area* Custom Cabinets with soft close doors and drawers* Undermount rangehood with electric cooktop and feature airfry oven* Fully airconditioned with split systems (all bedrooms and living, not just the master bedroom!)* LED downlights throughout* Security screens to all windows and sliding glass doors* Premium Tapware and tiles up to 600mm x 600mm included* Letterbox, 60m² of exposed aggregate driveway and clothesline.* Turf, irrigation and fencing included to entire block Visit our Savannah 'B' display home at 15 Firewheel Parade, Sanctum - open 9am until 5pm Fridays through to Tuesdays. Images are for illustrative purposes only.